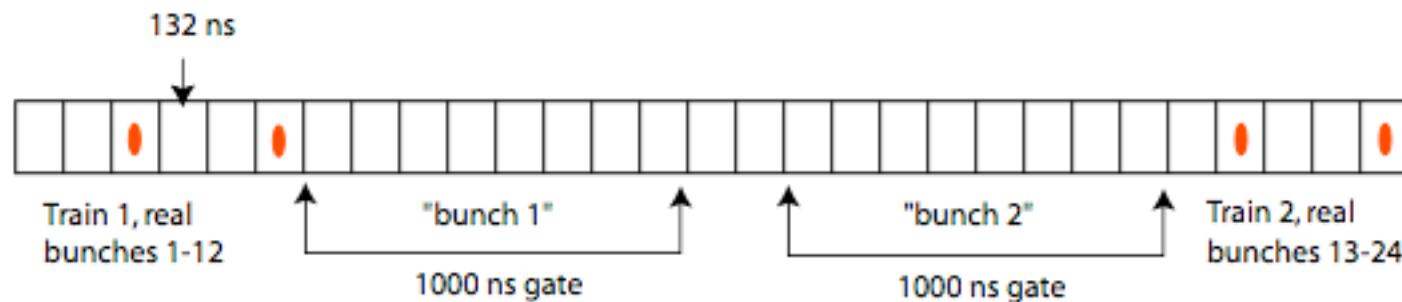


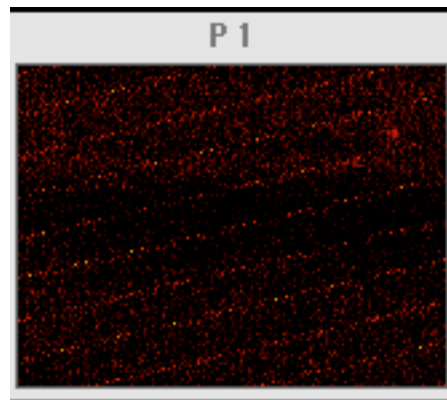
# Synclite abort gap study

Increased gain by about 50 times by:

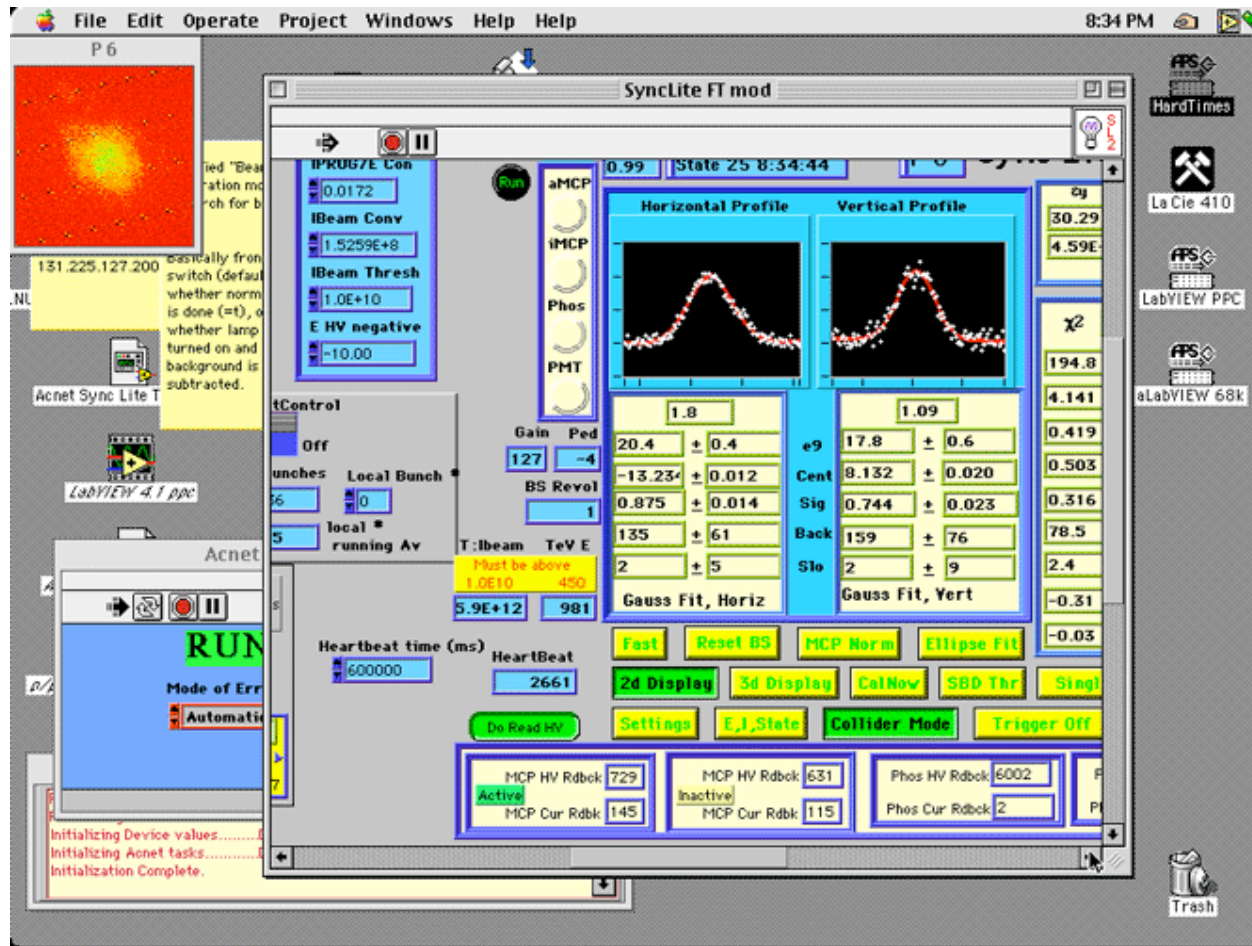
- Changed MCP high voltage: protons: 570 V to 730 V  
pbars: 610 V to 730 V
- Gate MCP 1 in every 2 turns: protons was 1 in 6 turns  
pbars was 1 in 20 turns  
(video capture every 30 ms - did not extend this)
- Gate width changed from 200 ns to 1000 ns



# 1 Hour after turning off TEL



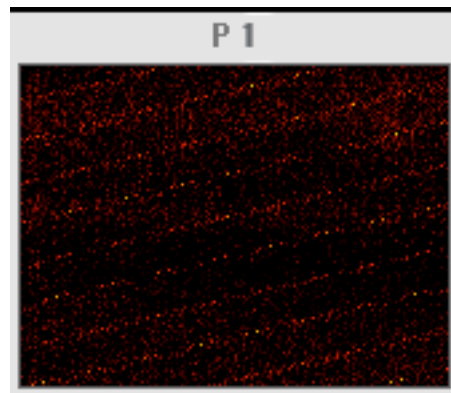
# After RF Station Lost (20:34)



28 March 2003

Harry Cheung

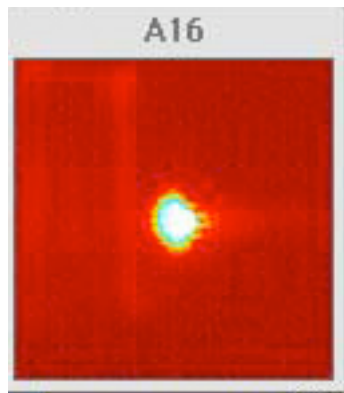
# After RF Station Lost (8:34pm)



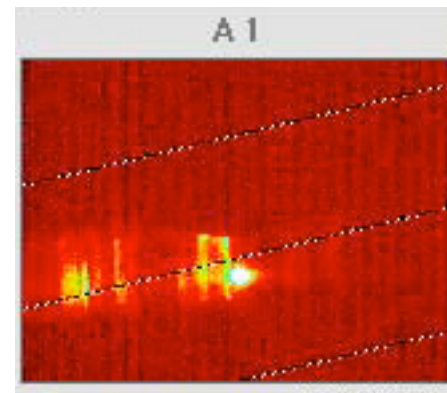
# Reflections seen in pbar image

With very high gain, reflections can be seen in pbar image (but not proton image.)

We need to move the pbar pick-off mirror to confirm we have the right image (want to solve pbar scale problem)



Lower gain (small region around beam)



High gain (full camera image)  
Reflections(?) seen left (inside) of main image