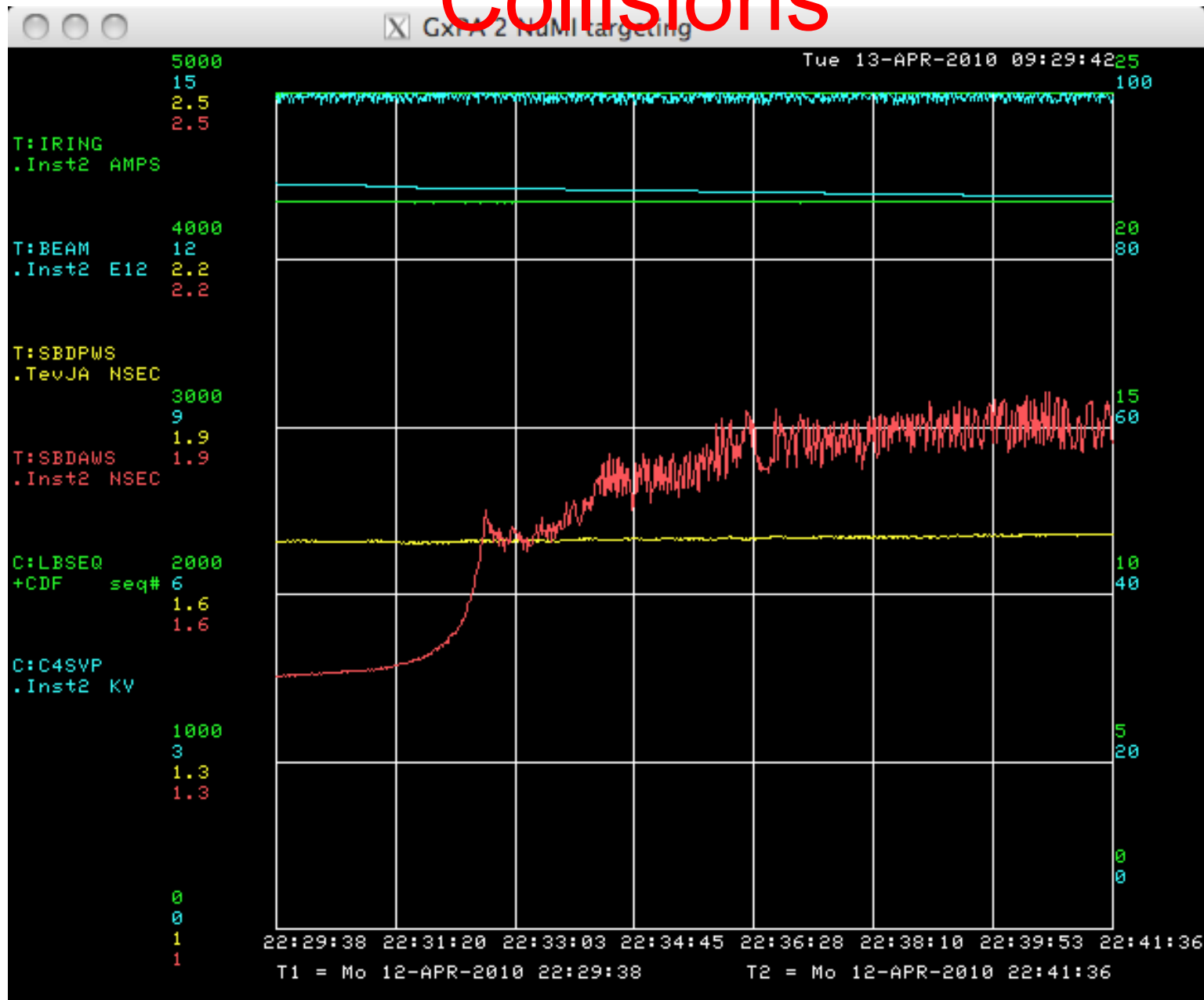
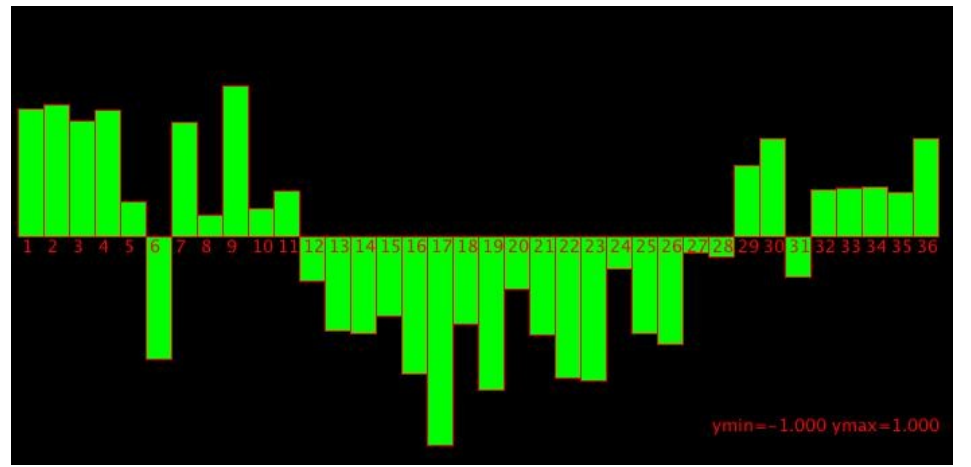
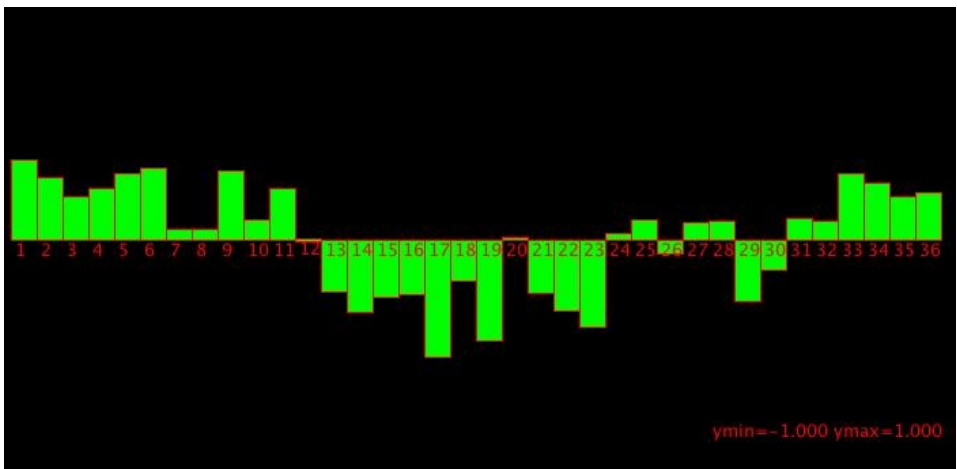
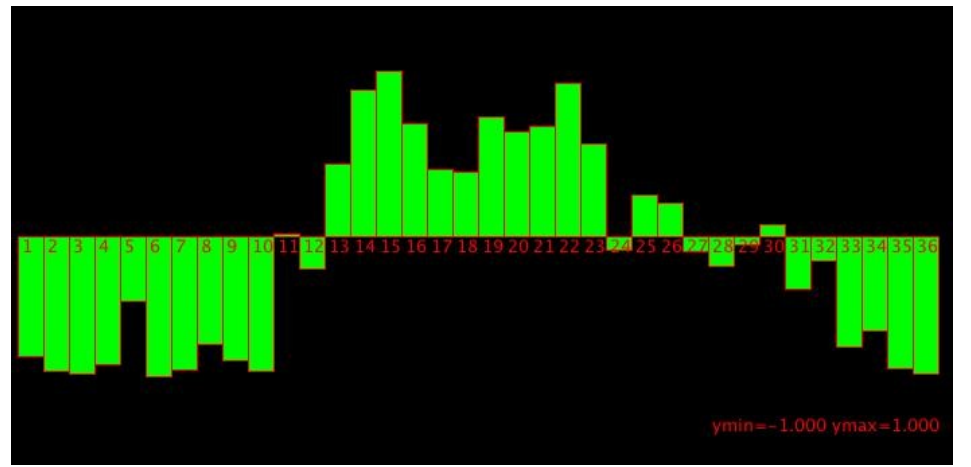
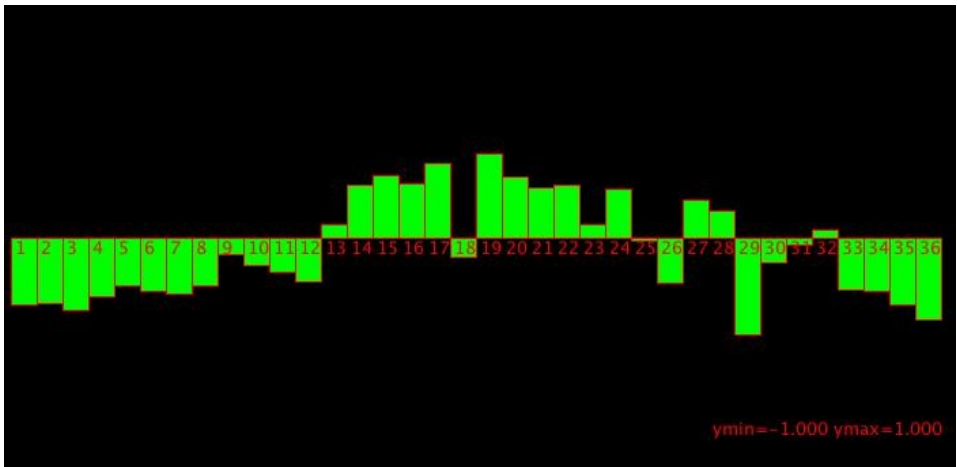
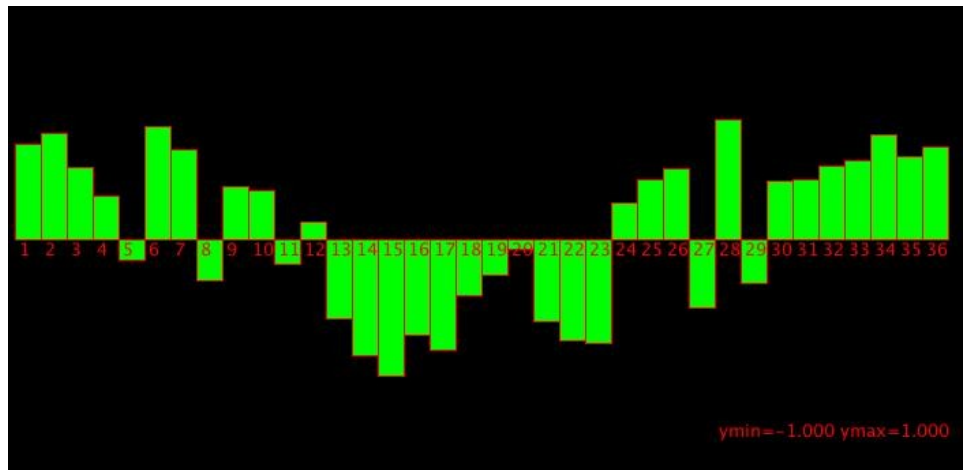
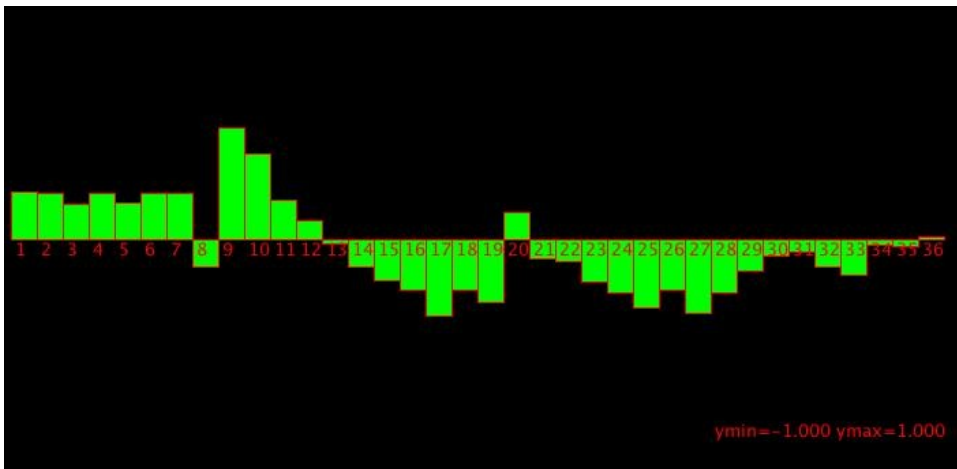


# Pbar Blowups

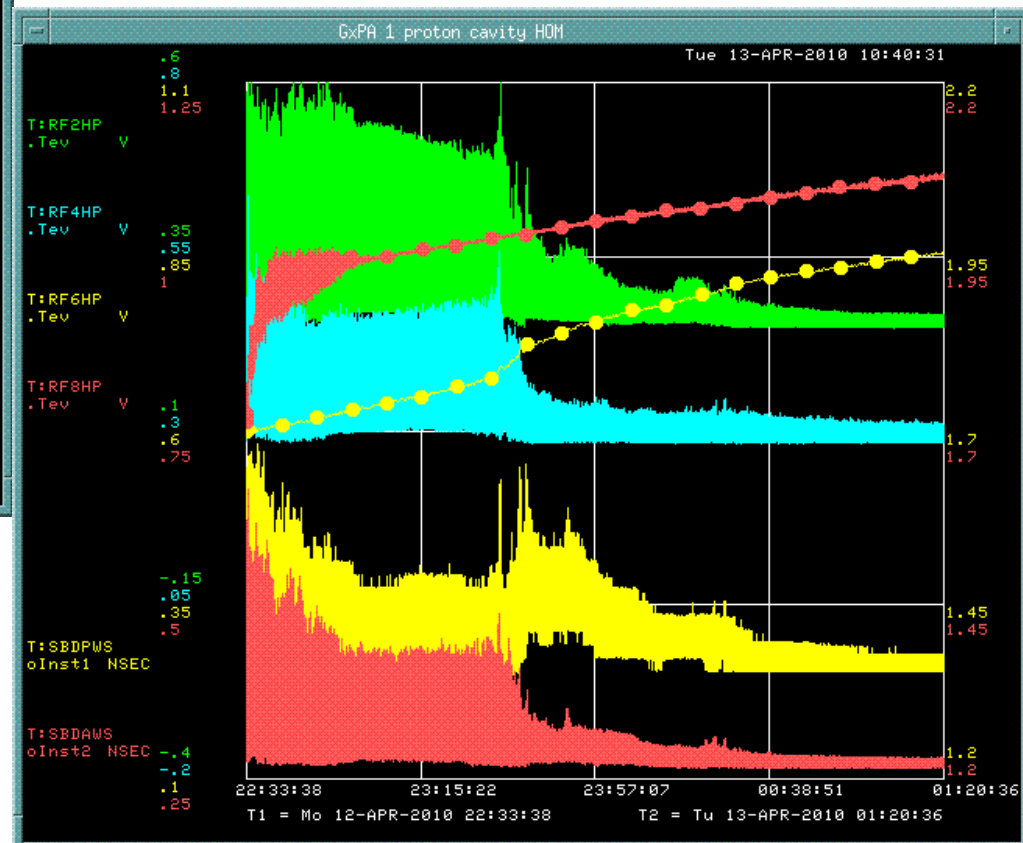
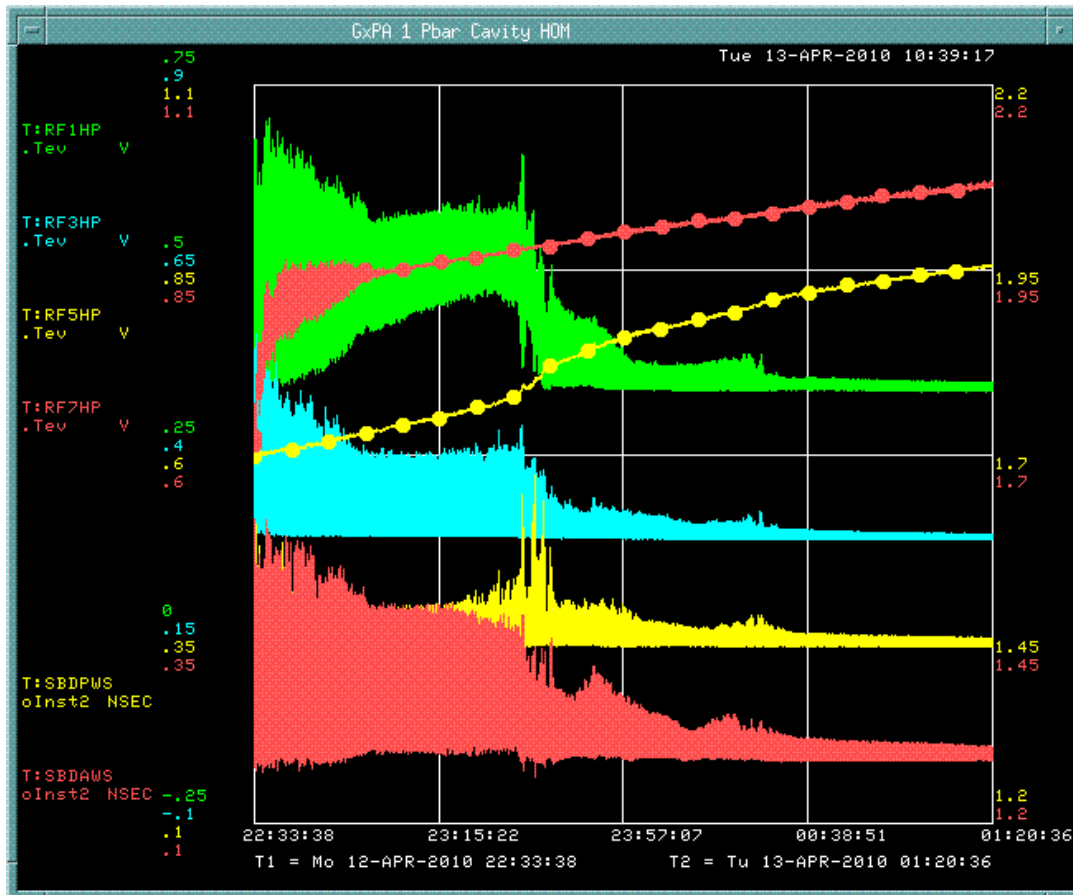
C.Y. Tan  
21 Sep 2010

# Pbar Longitudinal Blowup at Collisions





# Higher Order Mode Detectors



protons

pbars

7994	No	No	First store after shutdown. No blow ups low lum store.
7996	No	No	Low lum store. (184e30)
7999	No	No	Low Lum store (188e30)
8003	No	No	Low Lum store (173e30)
8004	No	No	Low Lum store (223e30)
8009	No	No	Low Lum store (217e30)
8010	No	No	Low Lum store (234e30)
8017	No	No	Low Lum store (249e30)
8023	No	Yes	Small pbar blowup 6 min into store. (Lum 189e30)
8024	Yes	Yes	Small blowups 3 min into HEP (Lum 290e30)
8025	No	No	
8034	No	No	Low lum store (173e30)
8042	No	No	Low Lum store (220e30)
8045	No	No	Lum=200e30
8046	Yes	Yes	Huge pbar blow up at collisions. (223e30)
8047	No	No	Pbars came in long already (1.7 ns)
8051	No	No	Low Lum store (185e30)
8055	No	No	Low Lum store (200e30). Reference orbit now 7909.
8056	No	No	
8057	No	No	
8058	Yes	Yes	Small blow ups 3 hrs into HEP
8059	Yes	No	Huge proton blow up at collisions. Very small for pbars.
8060	No	No	
8064	Yes	No	at flattop
8072	No	No	
8073	No	No	
8077	No	No	
8078	No	No	
8079	Yes	No	3 hrs into store for protons
8081	No	No	
8082	No	No	
8085	No	No	
8086	Yes	No	1.5 hrs into HEP. Very small for pbars.
8091	No	No	TRF3 PA replaced
8092	No	No	
8093	No	No	
8096	No	No	
8097	No	No	
8098	No	Yes	5 min into HEP
8099	No	Yes	11 min into HEP
8100	No	No	Lowered orbit by 0.5mm vert at F0
8105	No	No	
8106	No	No	

# Narrow Band Damper (Classical Analogue Design)

