

# Proton and pbar brightness and luminosity

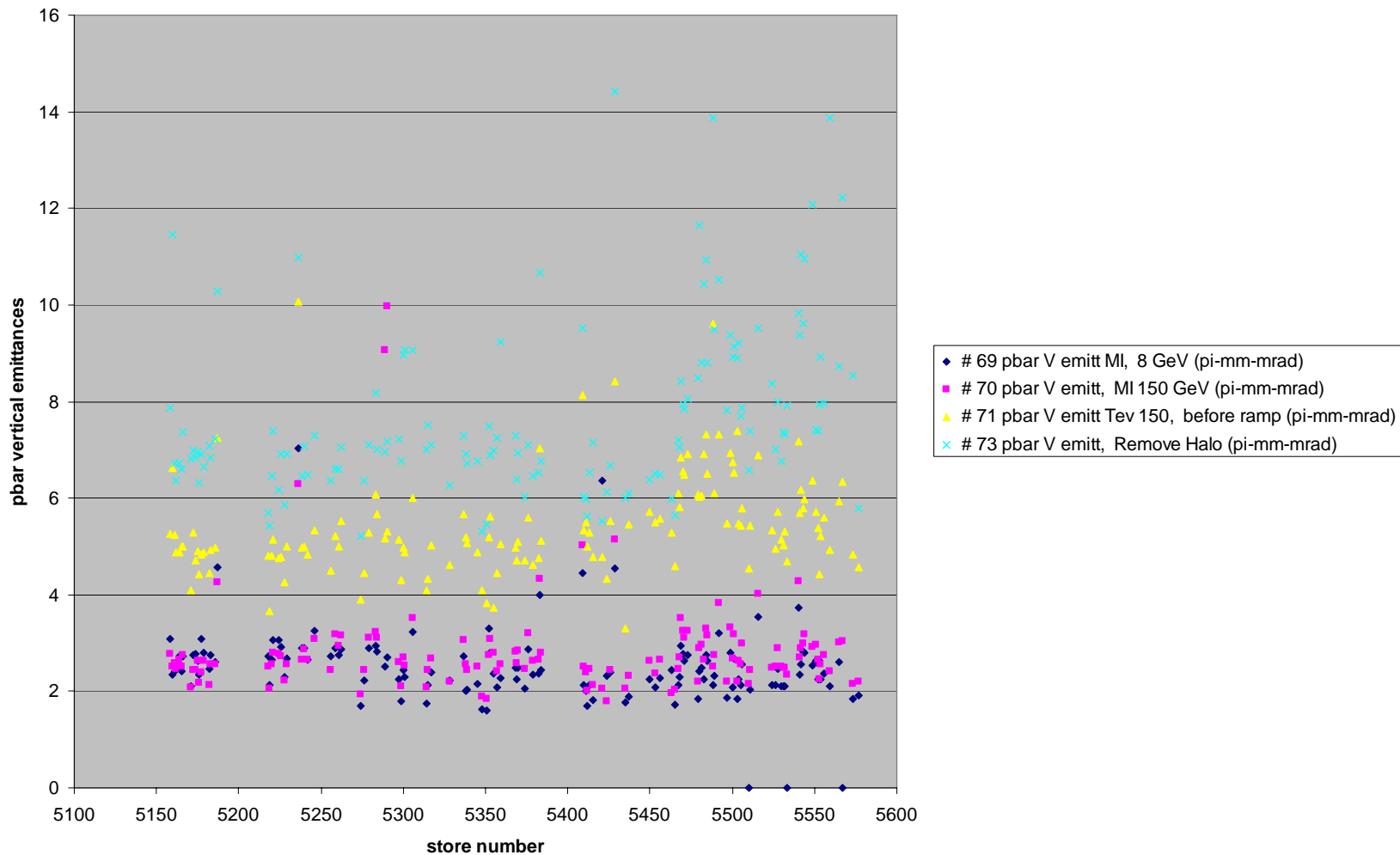
Vaia Papadimitriou  
August 4, 2007

The plots include information from stores 5158-5592, between January 1, 2007 and August 4, 2007.

# Pbar vertical emittance across the acceleration chain vs store number

pbar vertical emittances vs store number

01/01/07-07/24/07

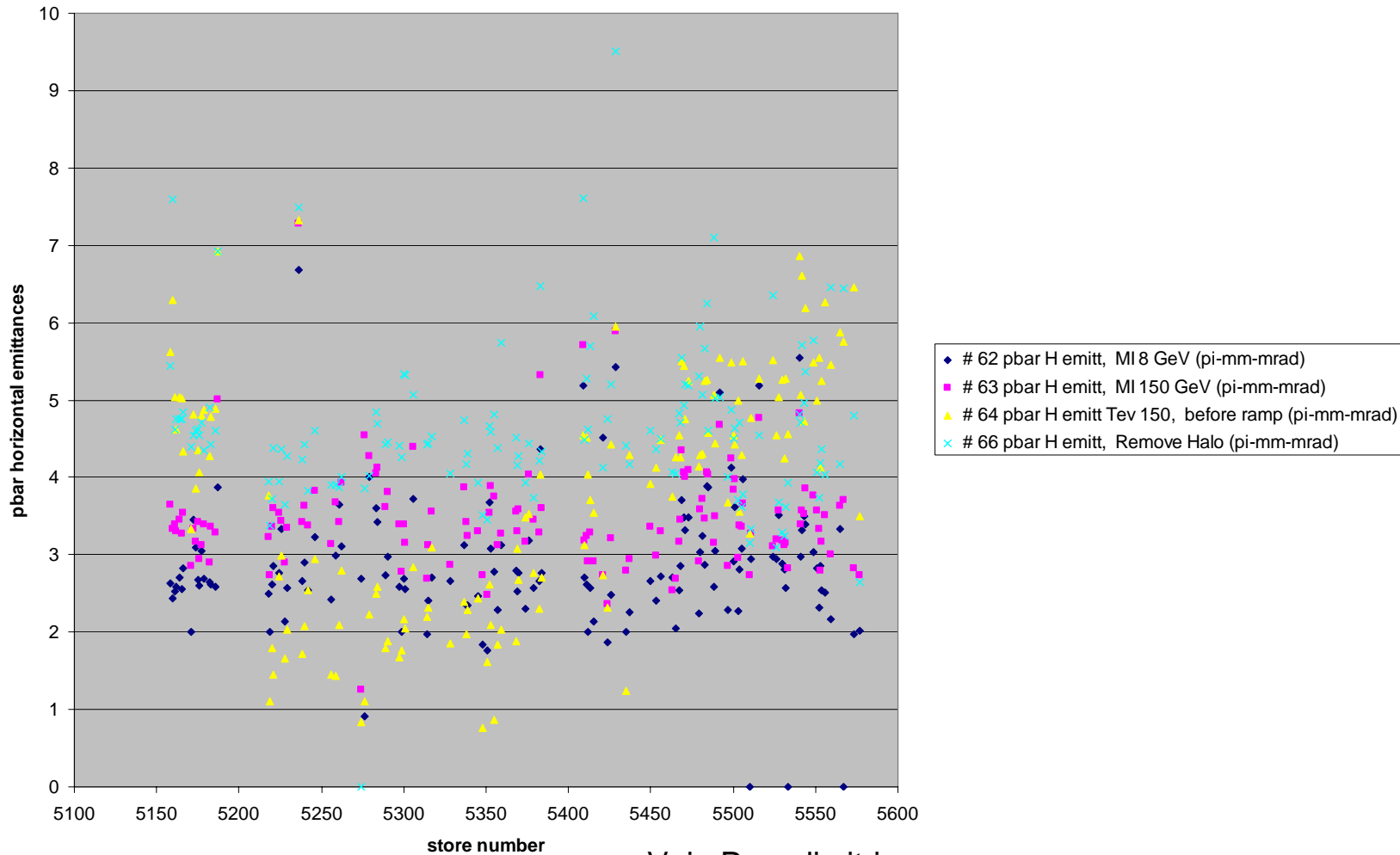


Vaia Papadimitriou

# Pbar horizontal emittance across the acceleration chain vs store number

pbar horizontal emittances vs store number

01/01/07-07/24/07

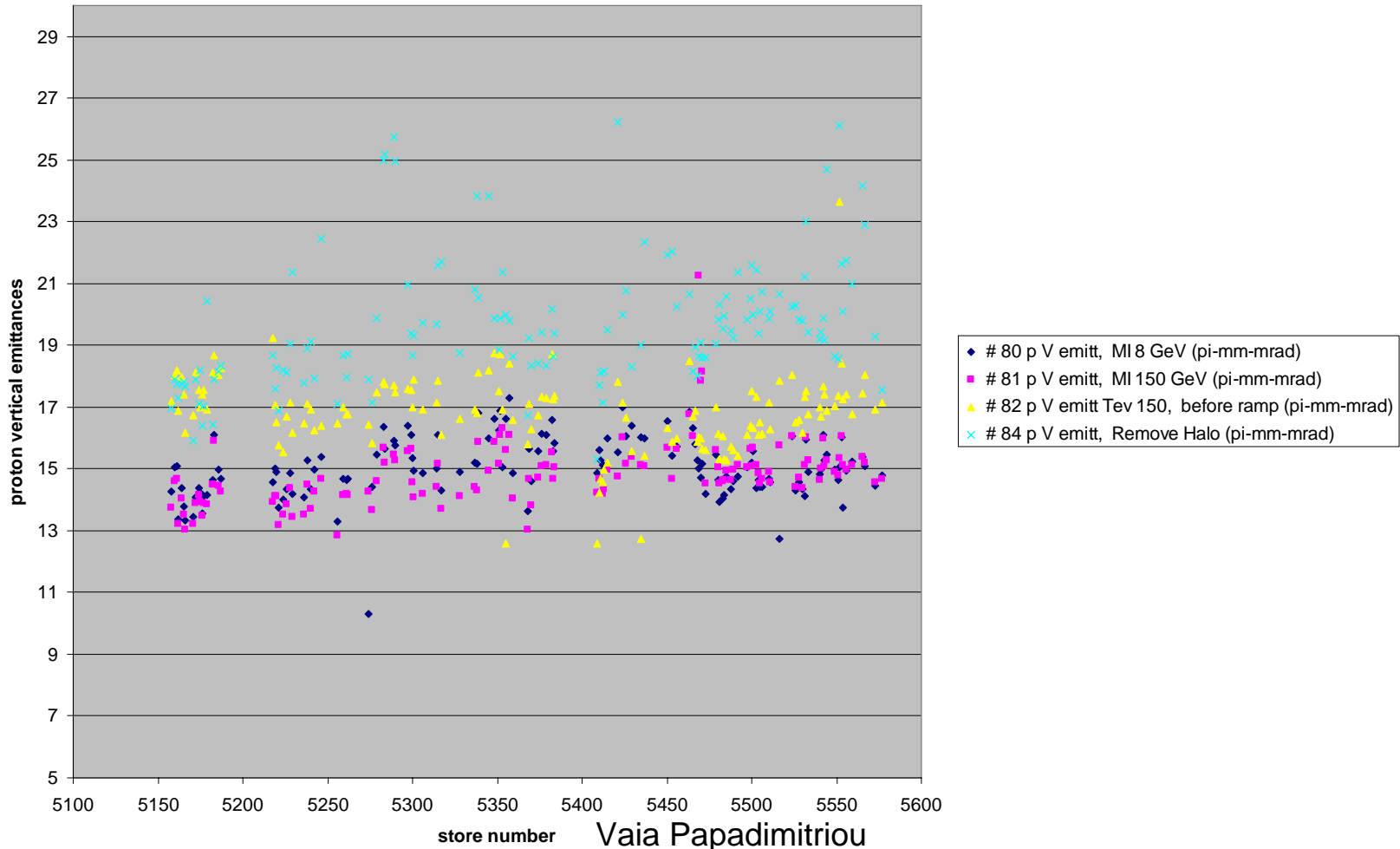


Vaia Papadimitriou

# Proton vertical emittance across the acceleration chain vs store number

01/01/07-07/24/07

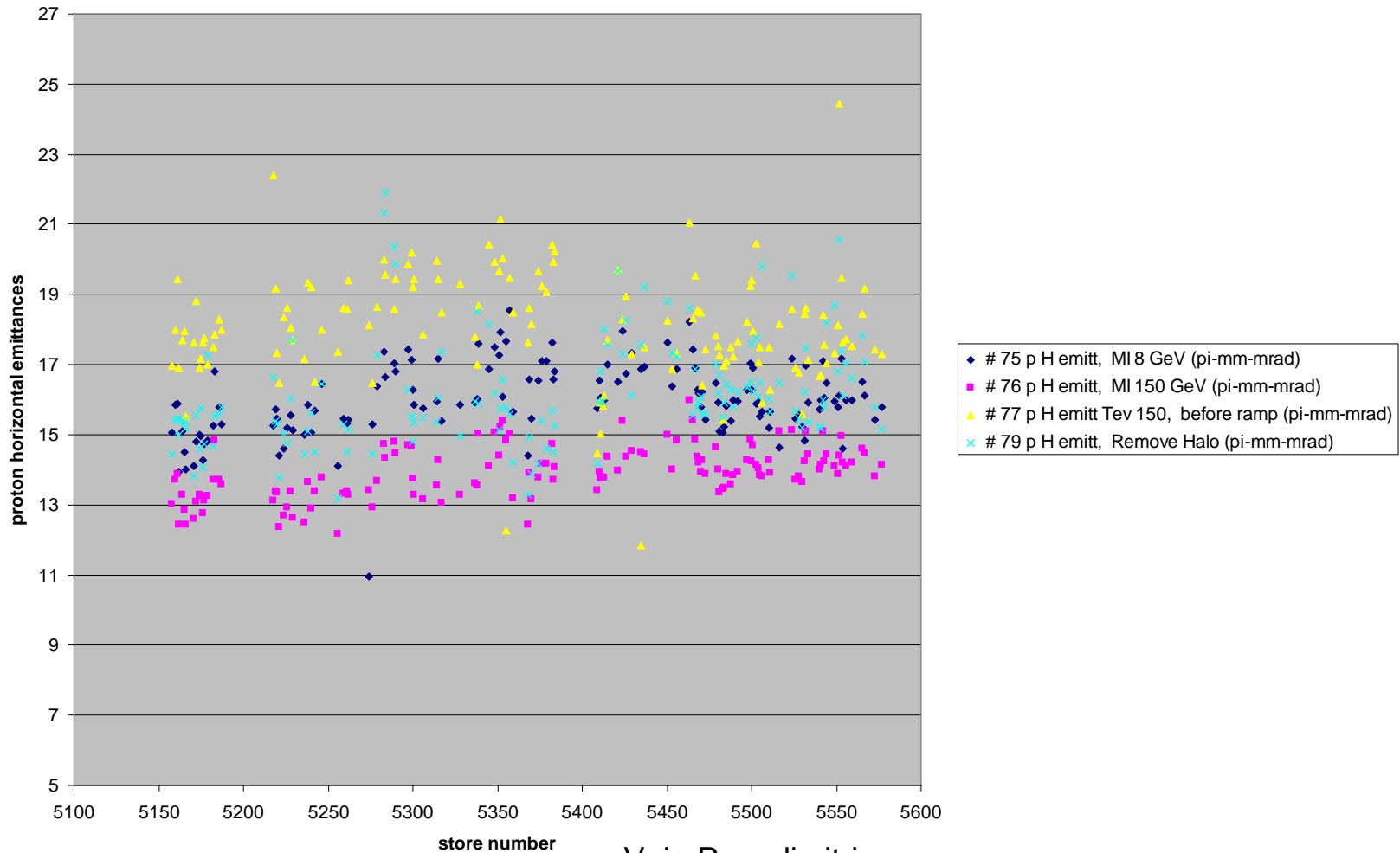
proton vertical emittances vs store number



# Proton horizontal emittance across the acceleration chain vs store number

01/01/07-07/24/07

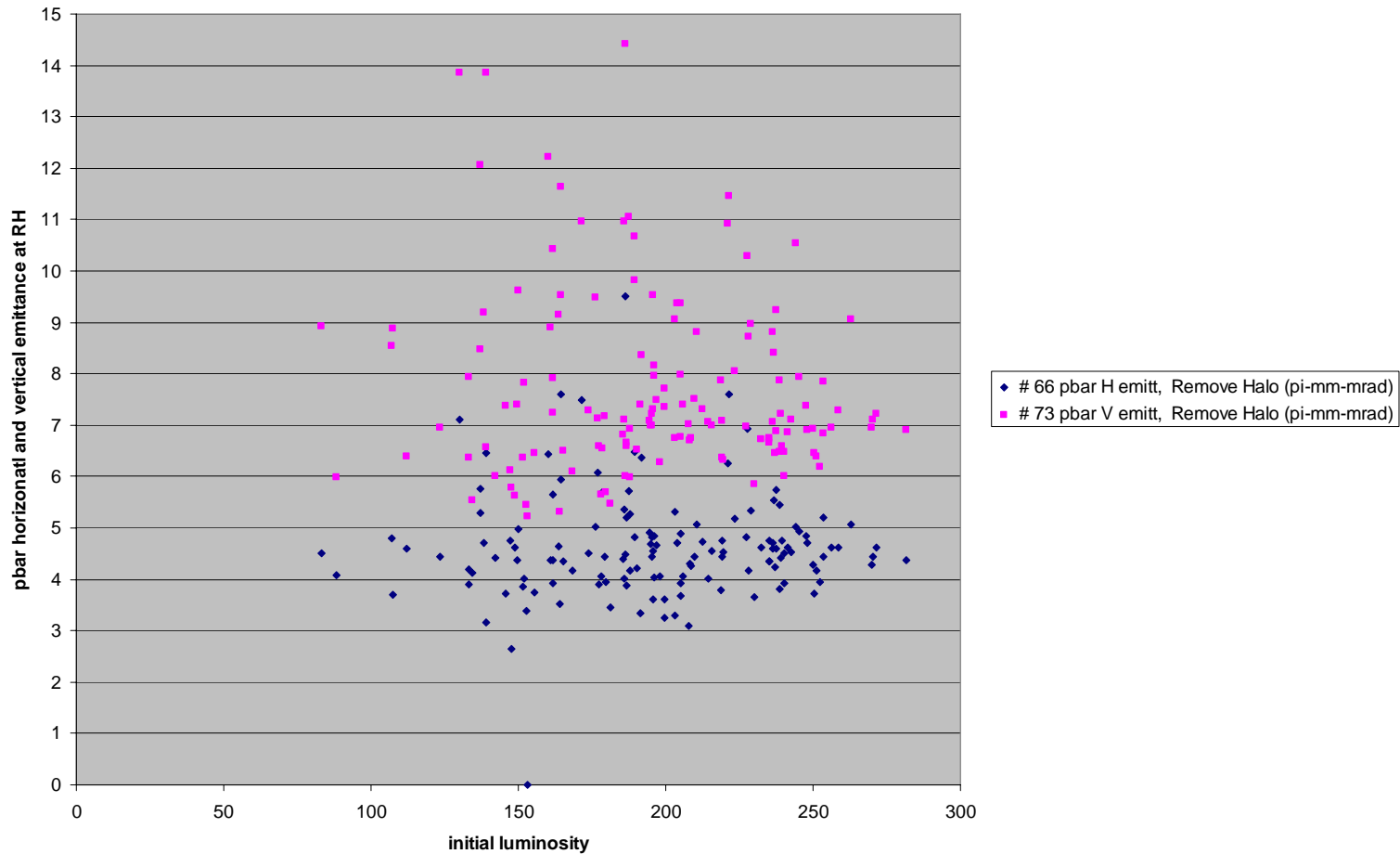
proton horizontal emittances vs store number



Vaia Papadimitriou

# Pbar horizontal and vertical emittance at Remove Halo vs init. luminosity

pbar horizontal and vertical emittance at Remove Halo as a function of initial luminosity 01/01/07-07/24/07

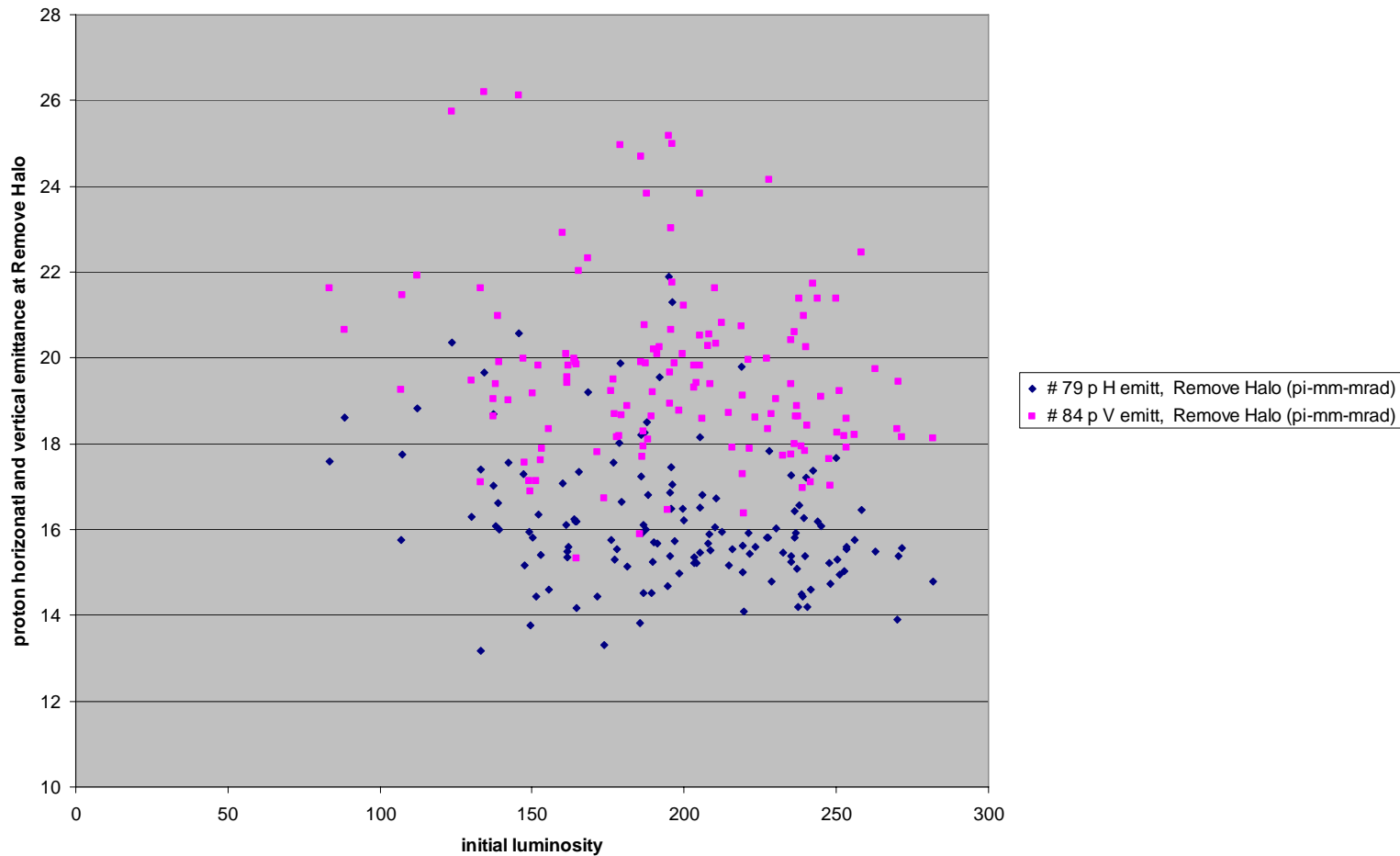


Vaia Papadimitriou

# Proton horizontal and vertical emittance at Remove Halo vs init. luminosity

01/01/07-07/24/07

proton horizontal and vertical emittance at Remove Halo as a function of initial luminosity

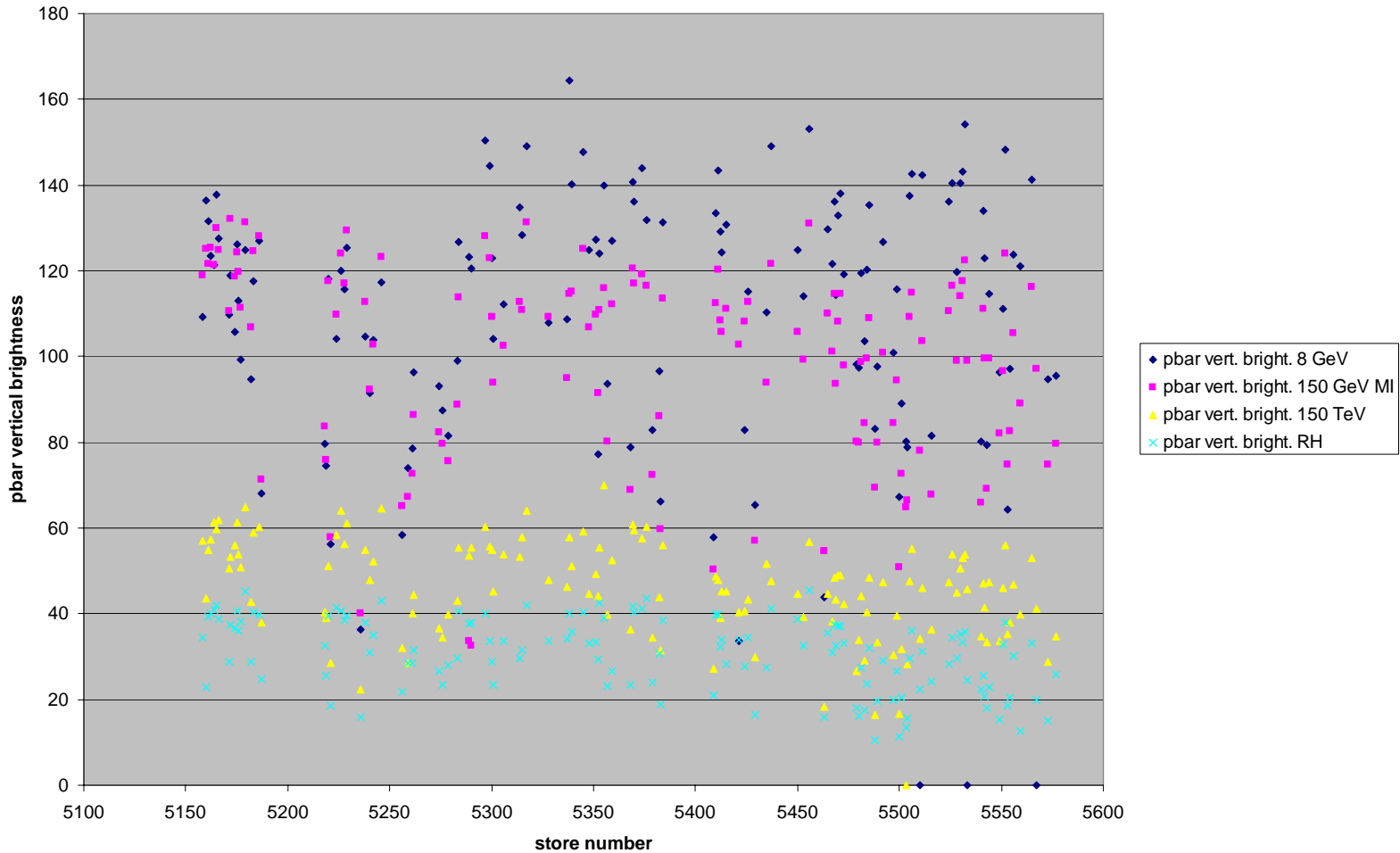


Vaia Papadimitriou

# Pbar vertical brightness across the acceleration chain vs store number

01/01/07-07/24/07

pbar vertical brightness vs store number



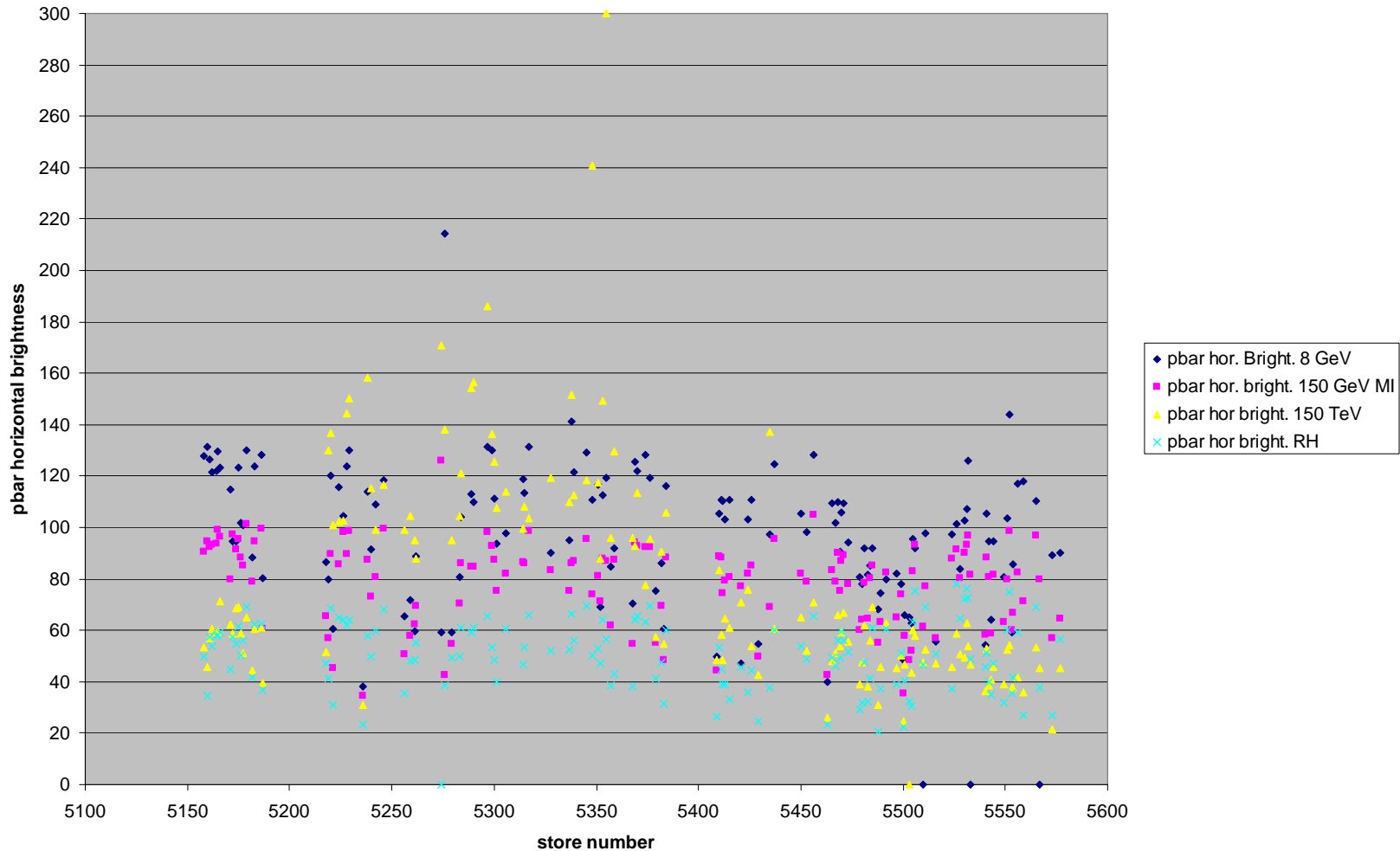
Vaia Papadimitriou



# Pbar horizontal brightness across the acceleration chain vs store number

pbar horizontal brightness vs store number

01/01/07-07/24/07

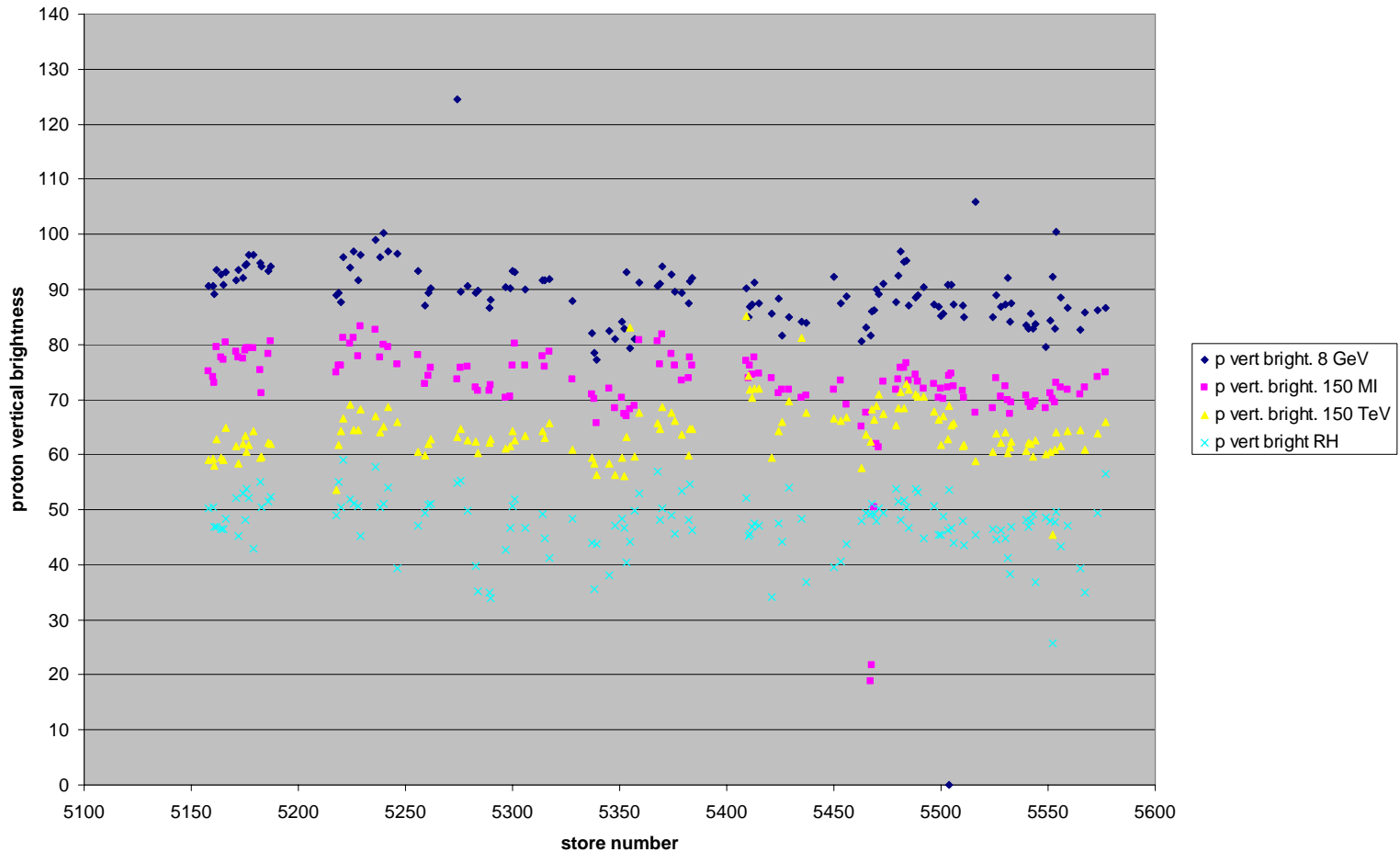


Vaia Papadimitriou

# Proton vertical brightness across the acceleration chain vs store number

01/01/07-07/24/07

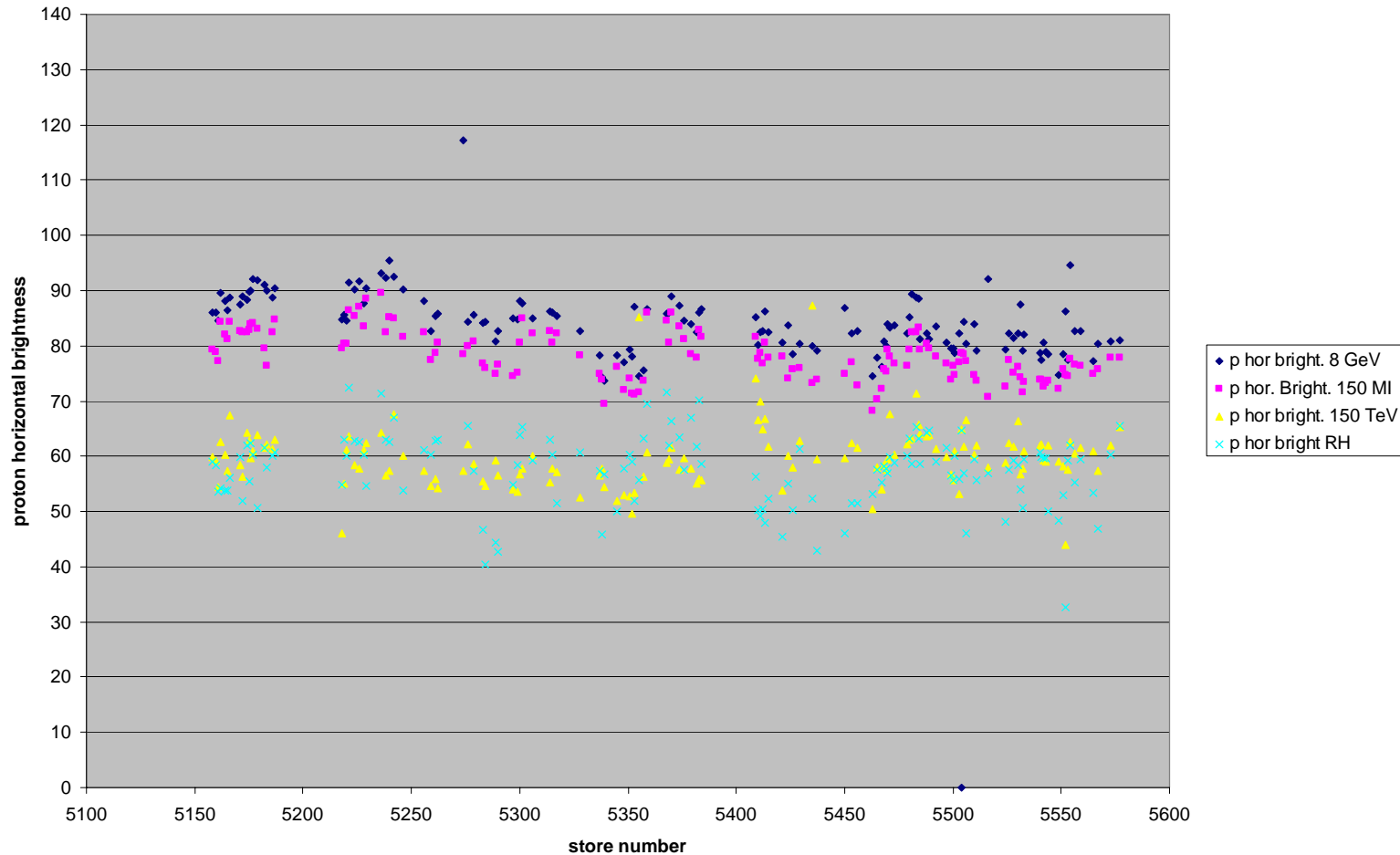
proton vertical brightness vs store number



# Proton horizontal brightness across the acceleration chain vs store number

01/01/07-07/24/07

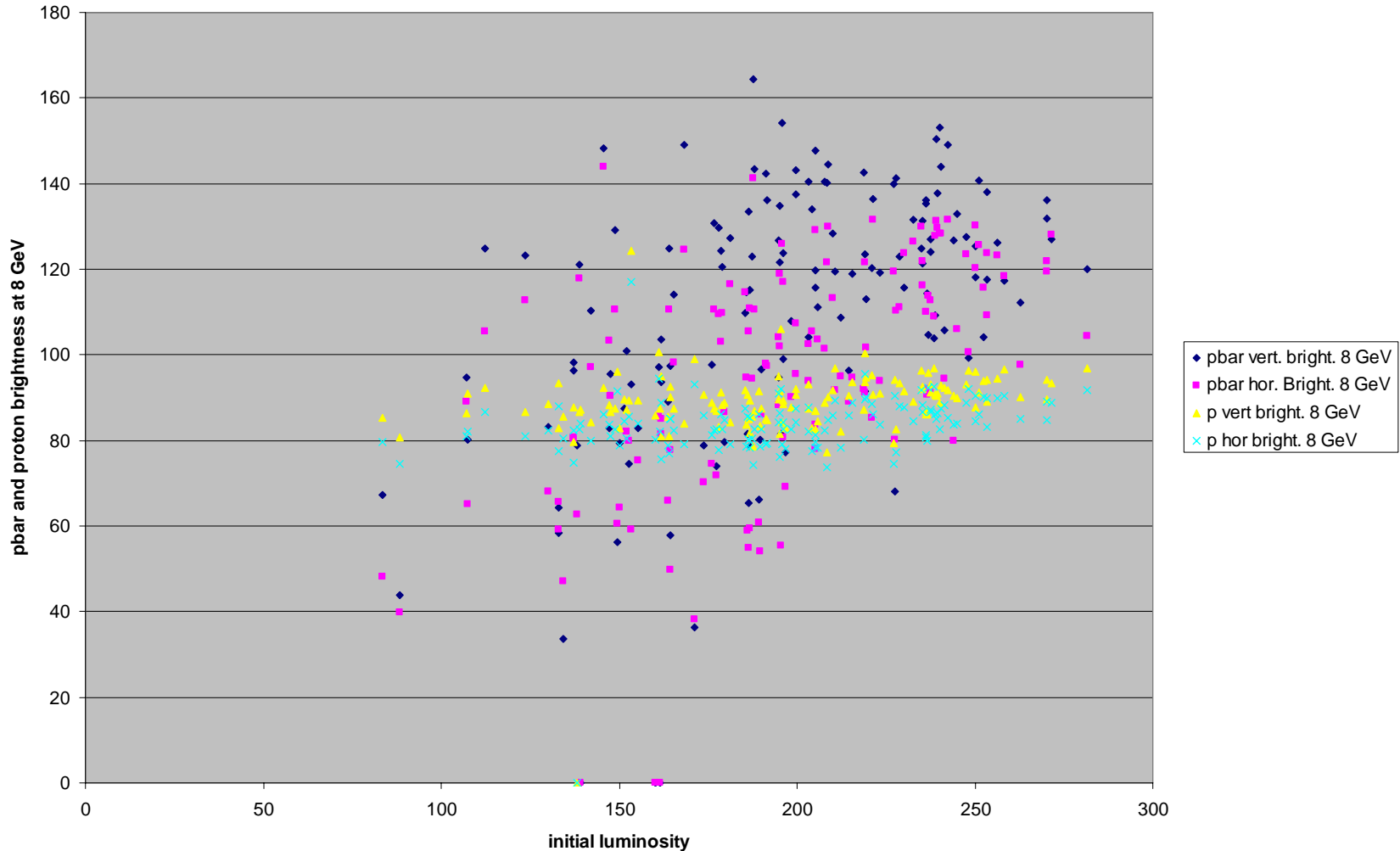
proton hor brightness vs store number



# Proton and pbar transverse brightness at 8 GeV vs initial luminosity

pbar and proton brightness at 8 GeV vs initial luminosity

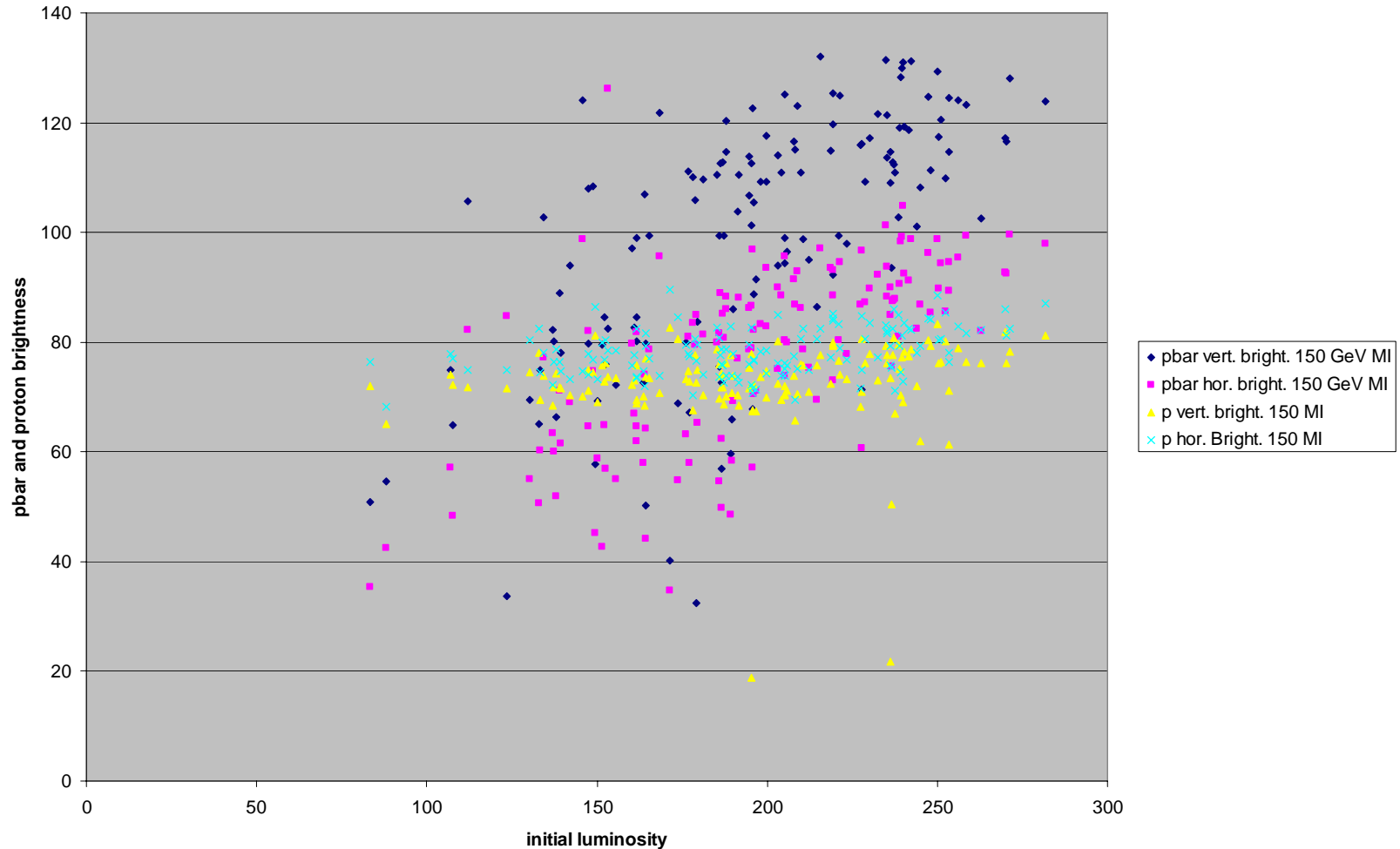
01/01/07-07/24/07



# Proton and pbar transverse brightness at 150 GeV MI vs initial luminosity

pbar and proton brightness vs initial luminosity, 150 MI

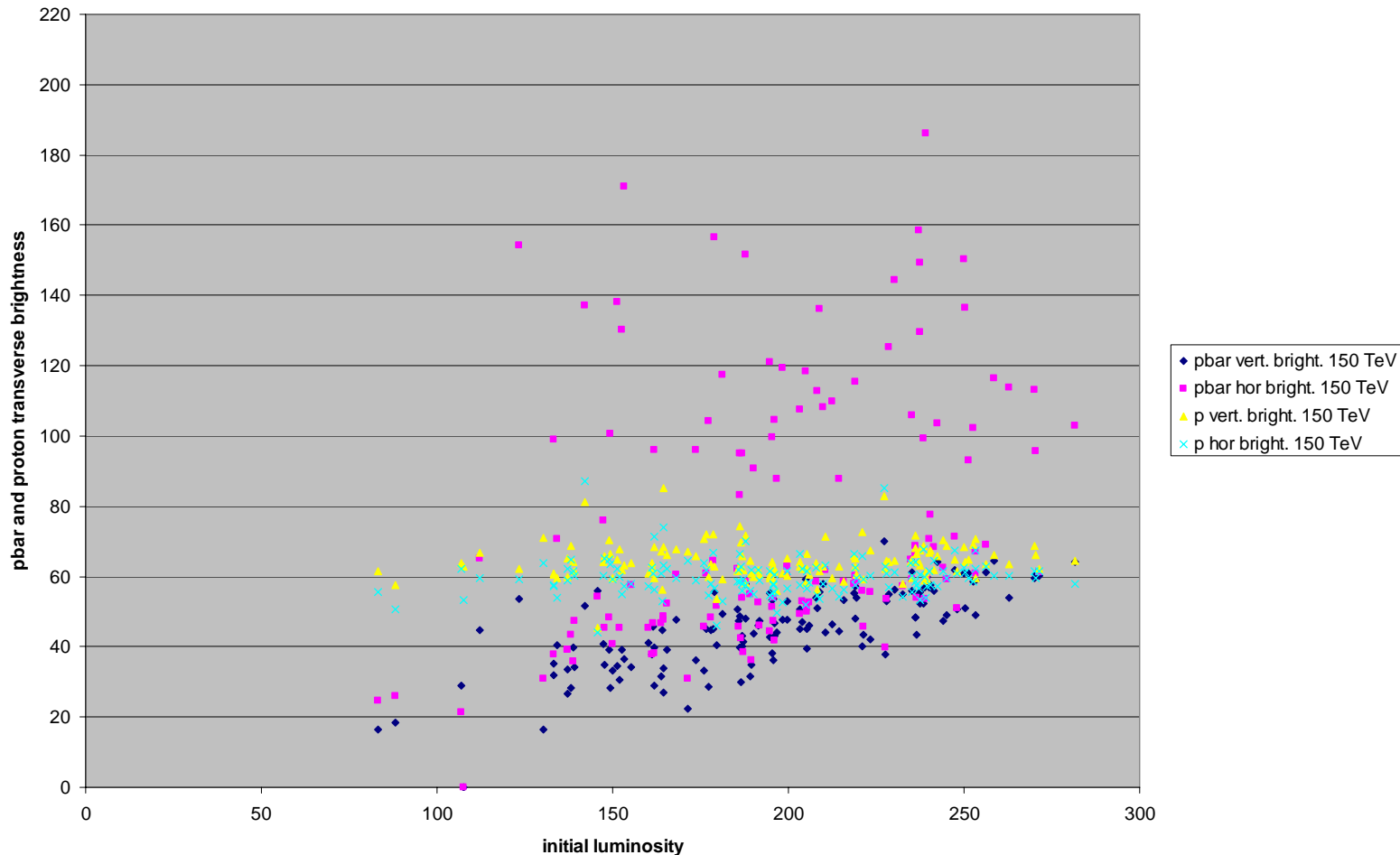
01/01/07-07/24/07



# Proton and pbar transverse brightness at 150 GeV Tevatron vs initial luminosity

01/01/07-07/24/07

pbar and proton transverse brightness vs initial luminosity, 150 TeV (before ramp)



# Proton and pbar transverse brightness at 980 GeV Tevatron (RH) vs initial luminosity

01/01/07-07/24/07

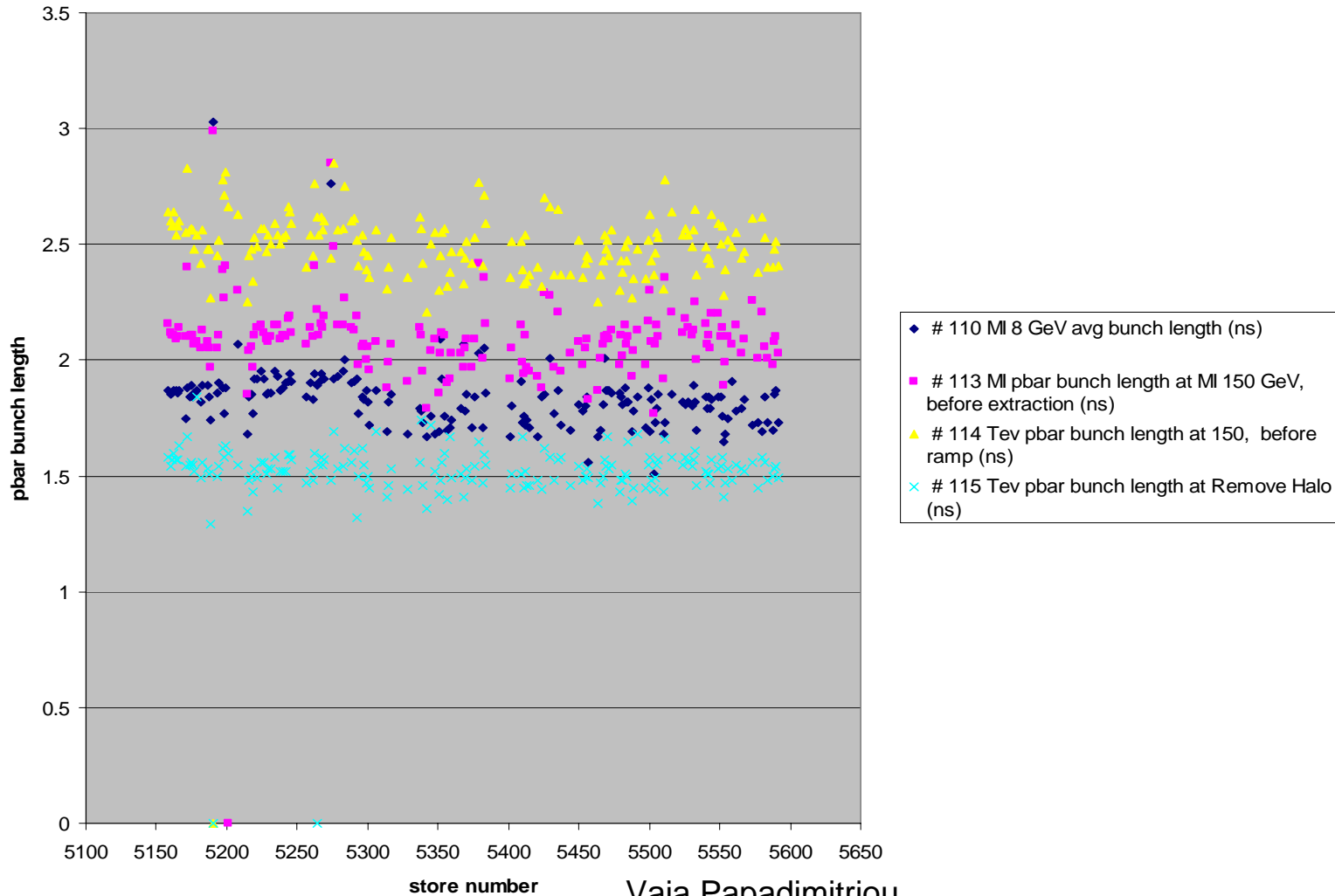
pbar and proton transverse brightness at Remove Halo vs initial luminosity



# pbar bunch length across the accel. chain vs store number

pbar bunch length vs store number

01/01/07-08/04/07



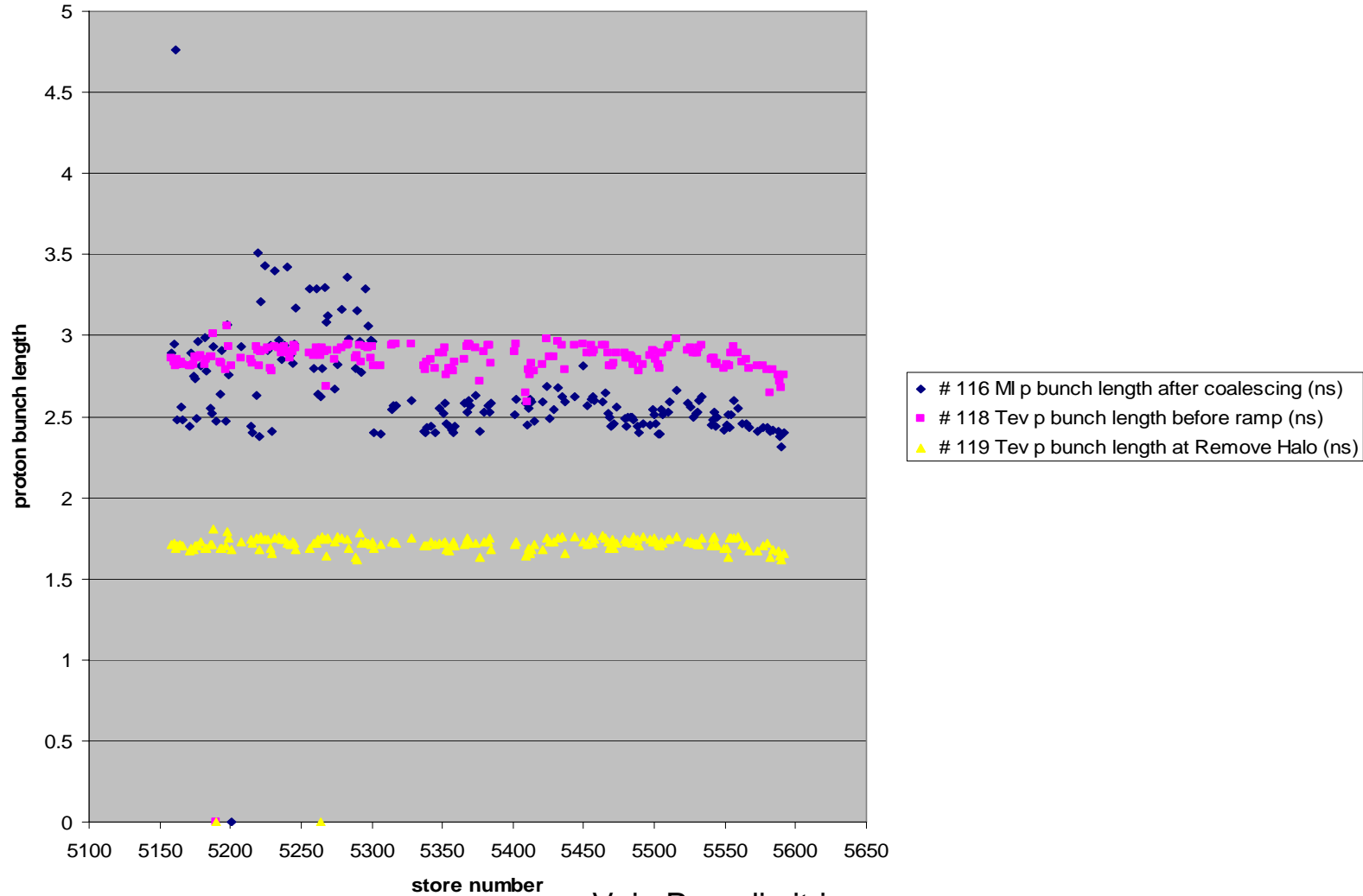
Vaia Papadimitriou



# proton bunch length across the accel. chain vs store number

proton bunch length vs store number

01/01/07-08/04/07

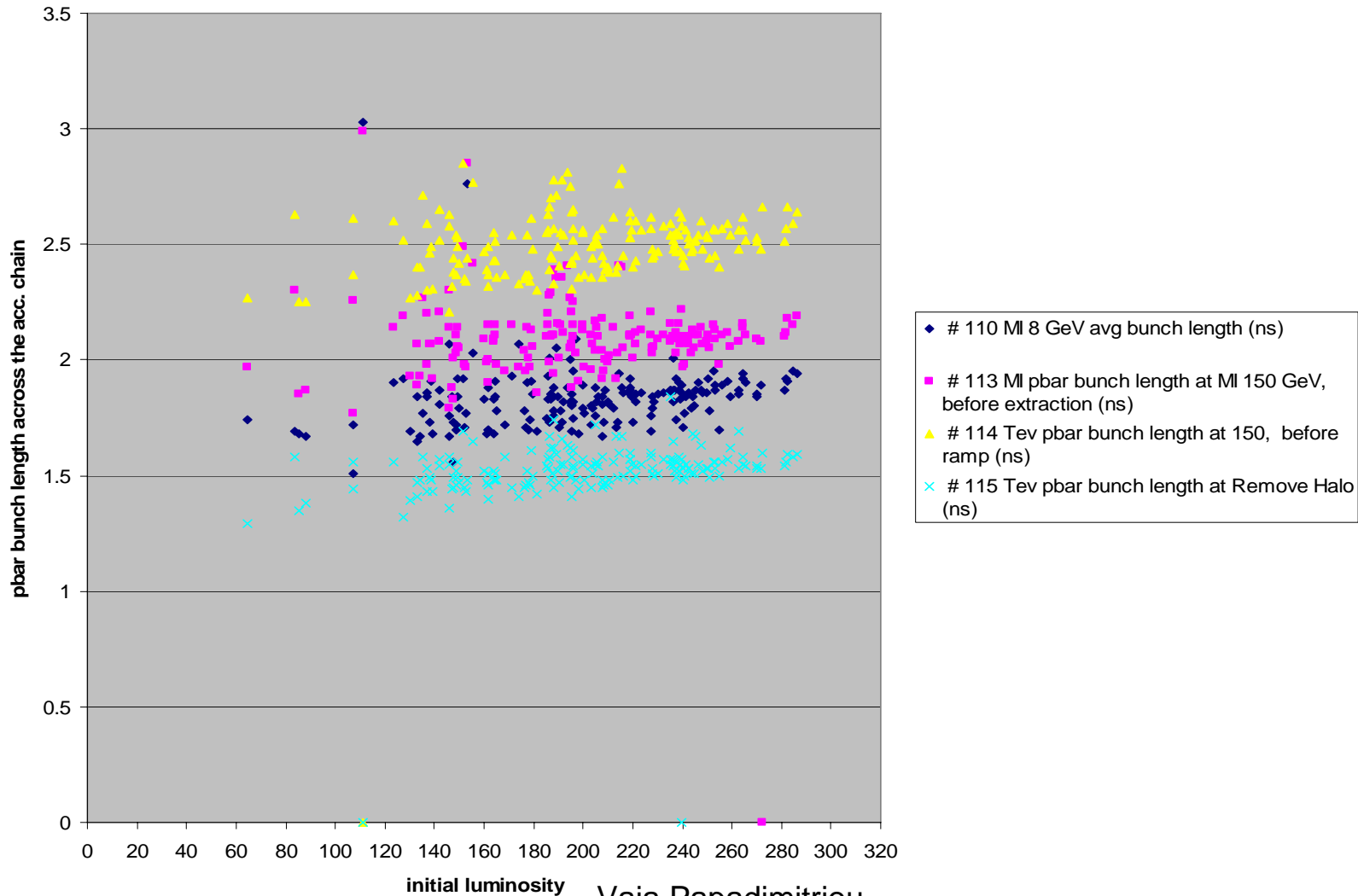


Vaia Papadimitriou

# pbar bunch length across the accel. chain vs initial luminosity

pbar bunch length vs init. luminosity

01/01/07-08/04/07

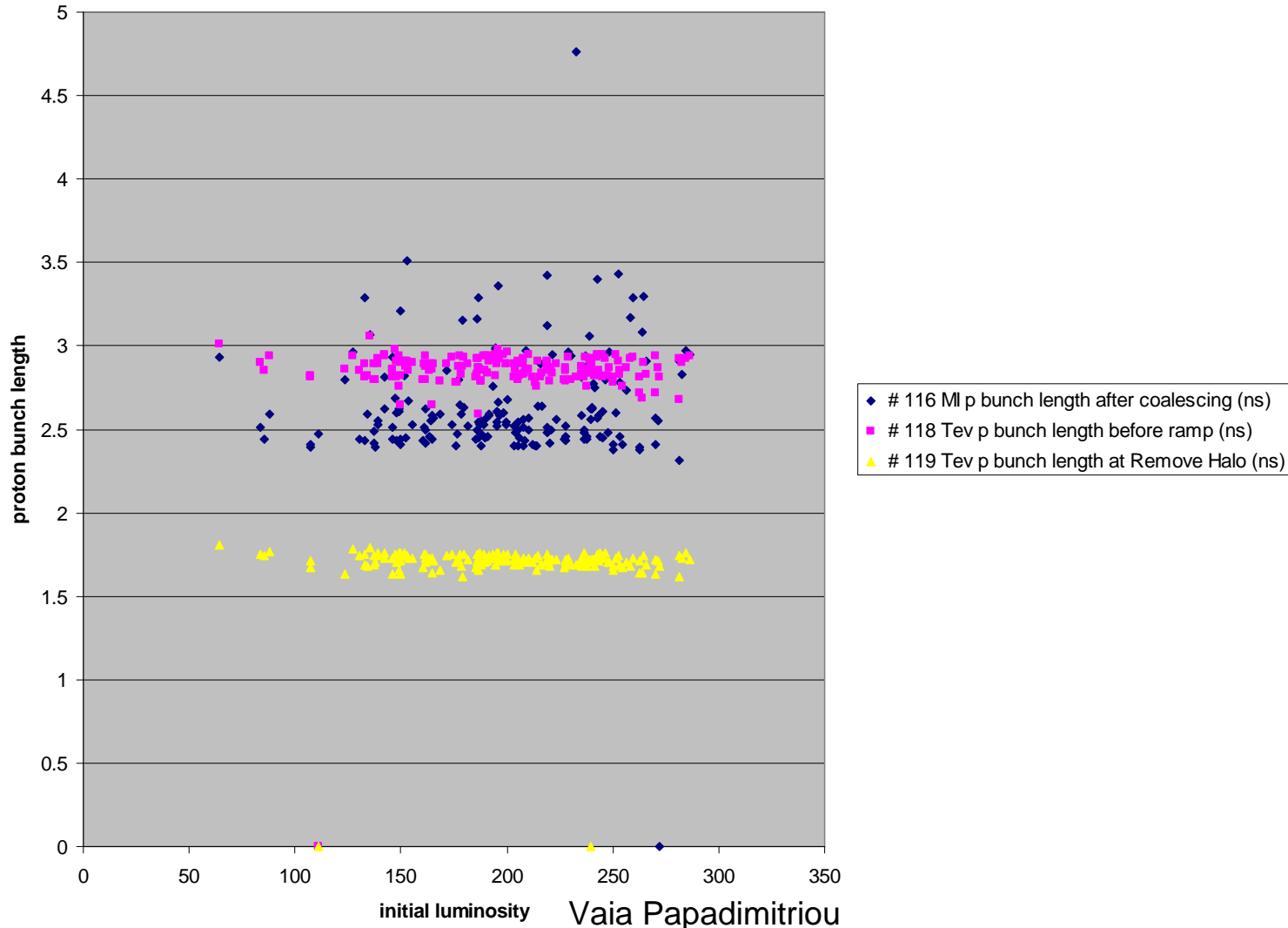


Vaia Papadimitriou

# proton bunch length across the accel. chain vs initial luminosity

proton bunch length across the accel. chain vs initial luminosity

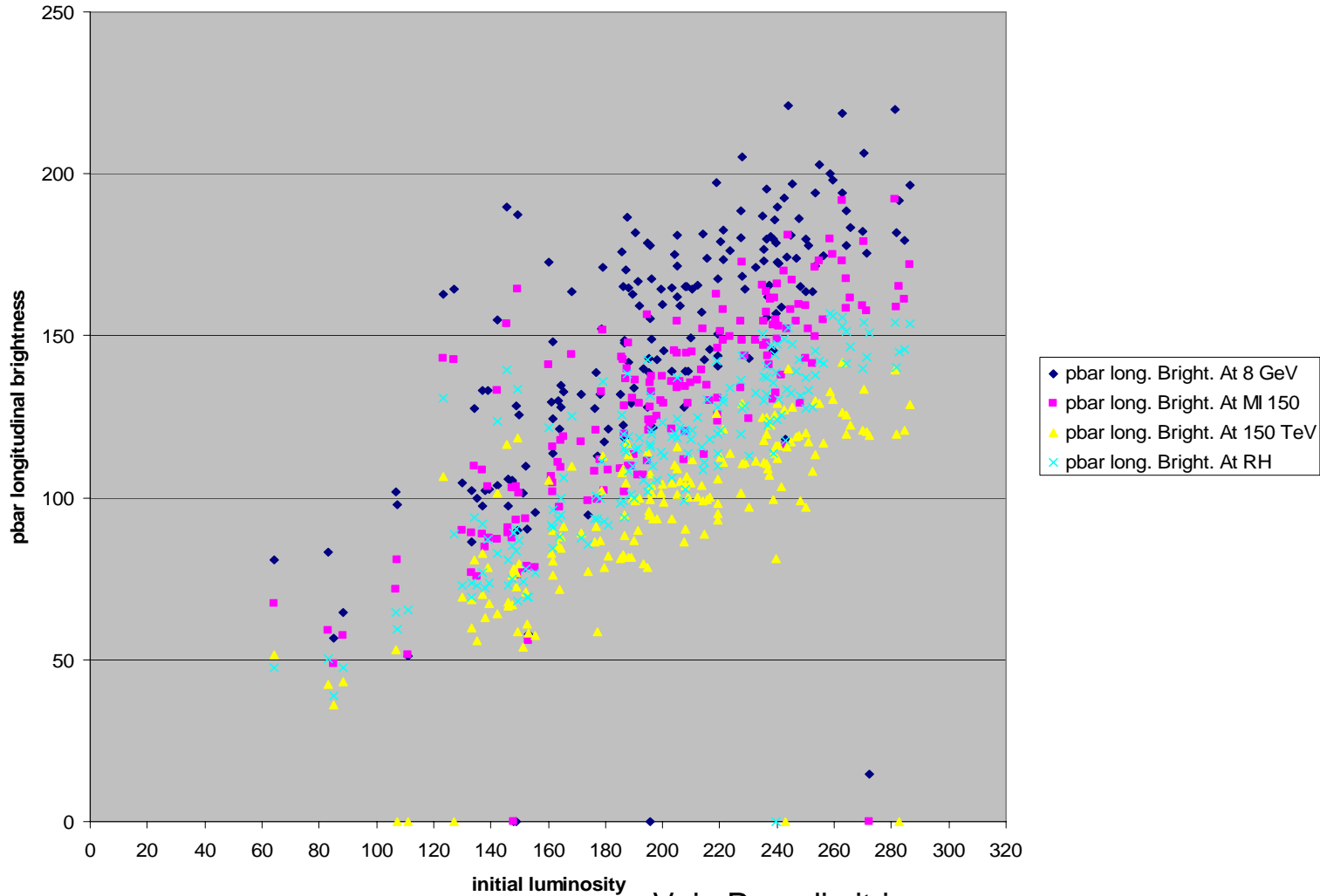
01/01/07-08/04/07



# pbar longitudinal brightness across the accel. chain vs initial luminosity

pbar longitudinal brightness across the accelerator chain vs initial luminosity

01/01/07-08/04/07



Vaia Papadimitriou

# proton longitudinal brightness across the accel. chain vs initial luminosity

proton longitudinal brightness vs initial luminosity

01/01/07-08/04/07

