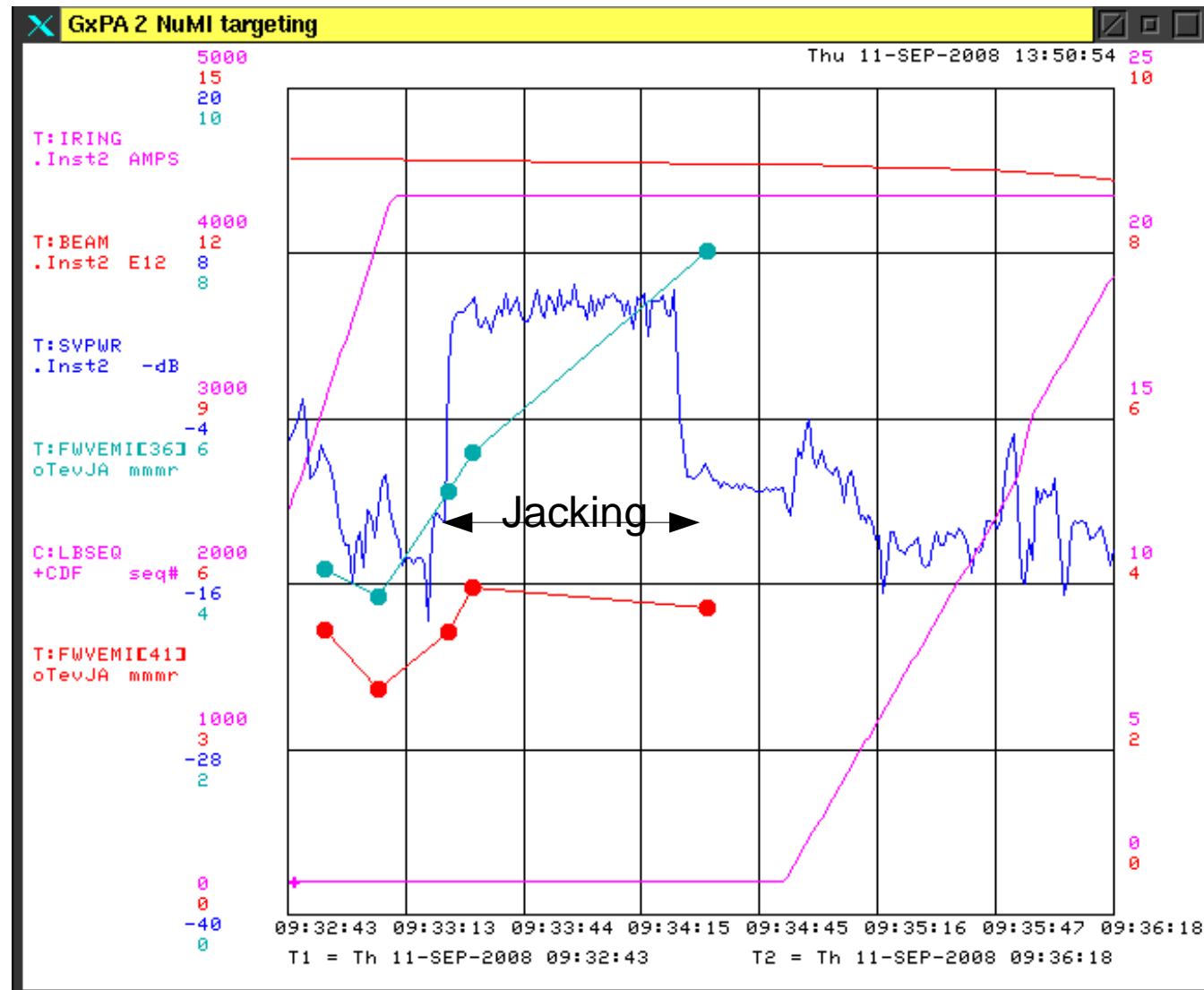


Pbar Jacker

- From measurements using sync light, we found that at 980GeV, the growth rate is
 - 2.6 pi mm mrad/min
 - Presently turned on for 60s at flattop.
 - Expect ~3 pi growth for all pbar bunches.
 - Cannot use sync light because mirror is not inserted at this time.
- Hope to use IPM because we can average.
- FW has some issues

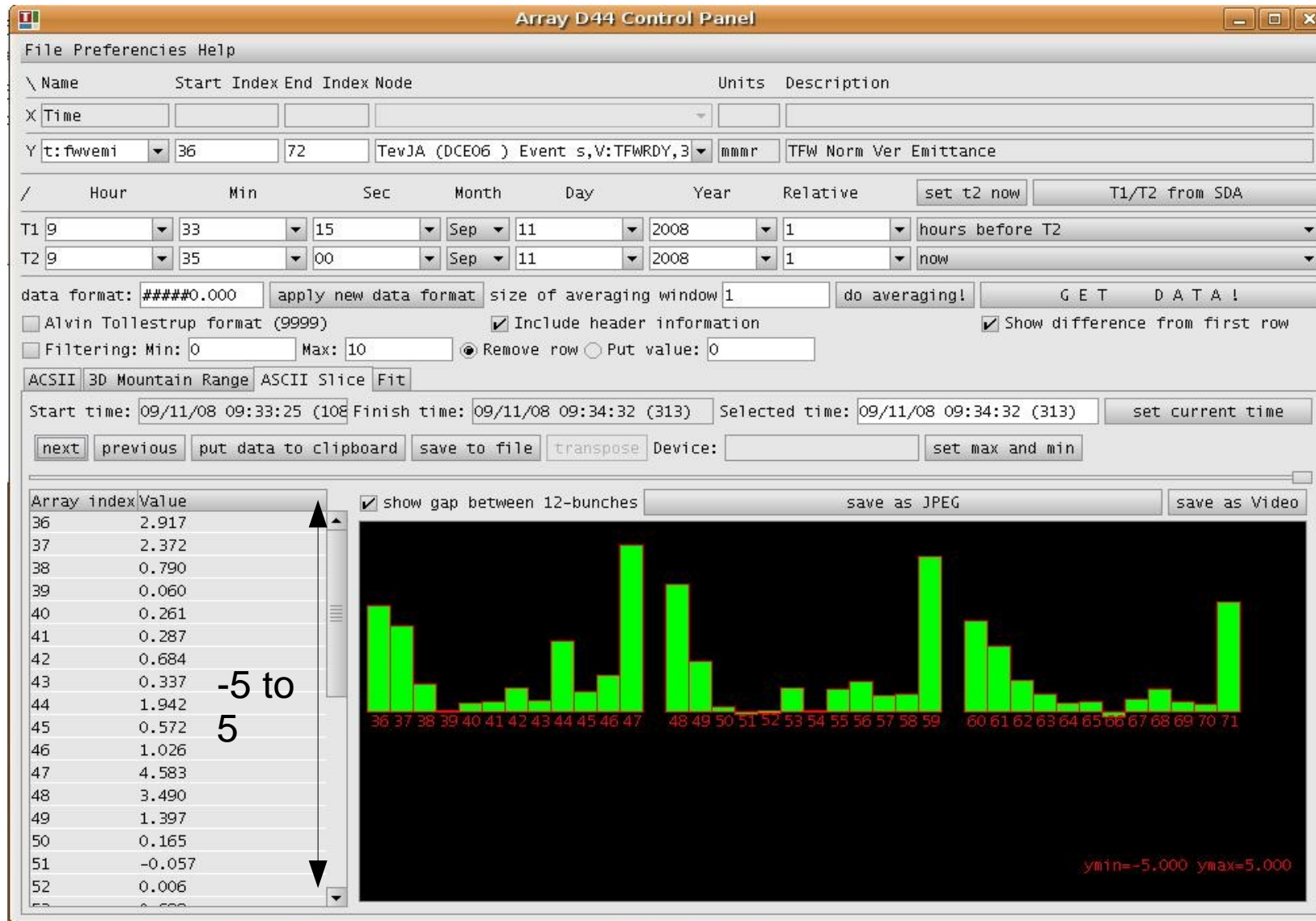
Pbar Beam Blowup



For store 6412.
Looking at pbar
vert emittance
bunch 1 increased
by 3 pi while
bunch 6 became
a little bit smaller!

The emittance
growth does NOT
make sense.

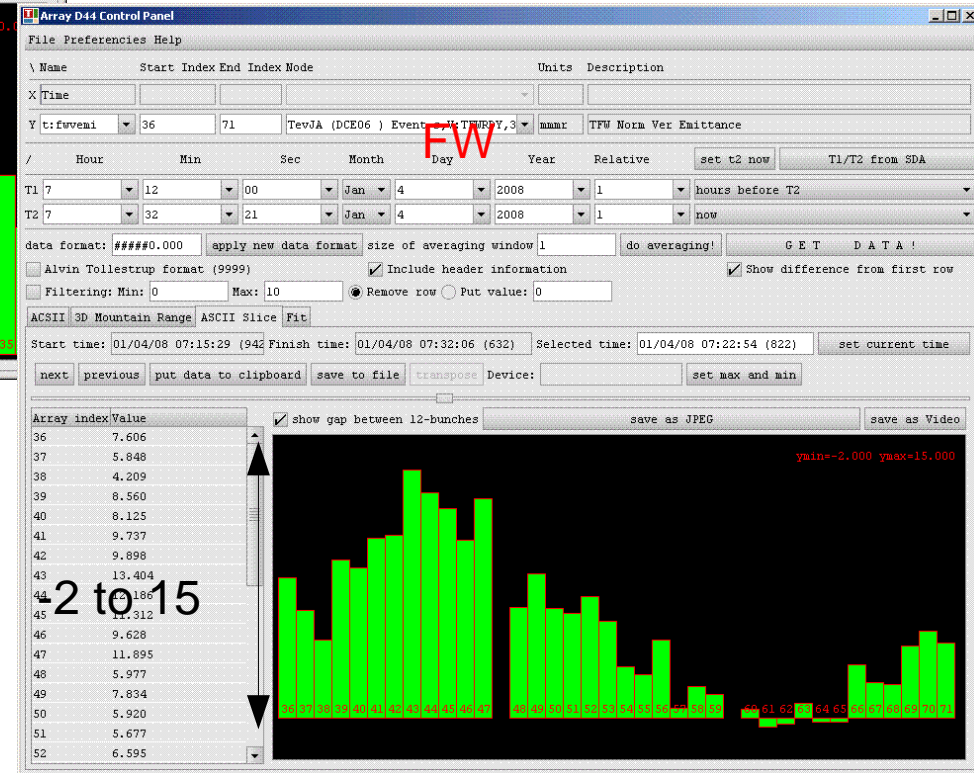
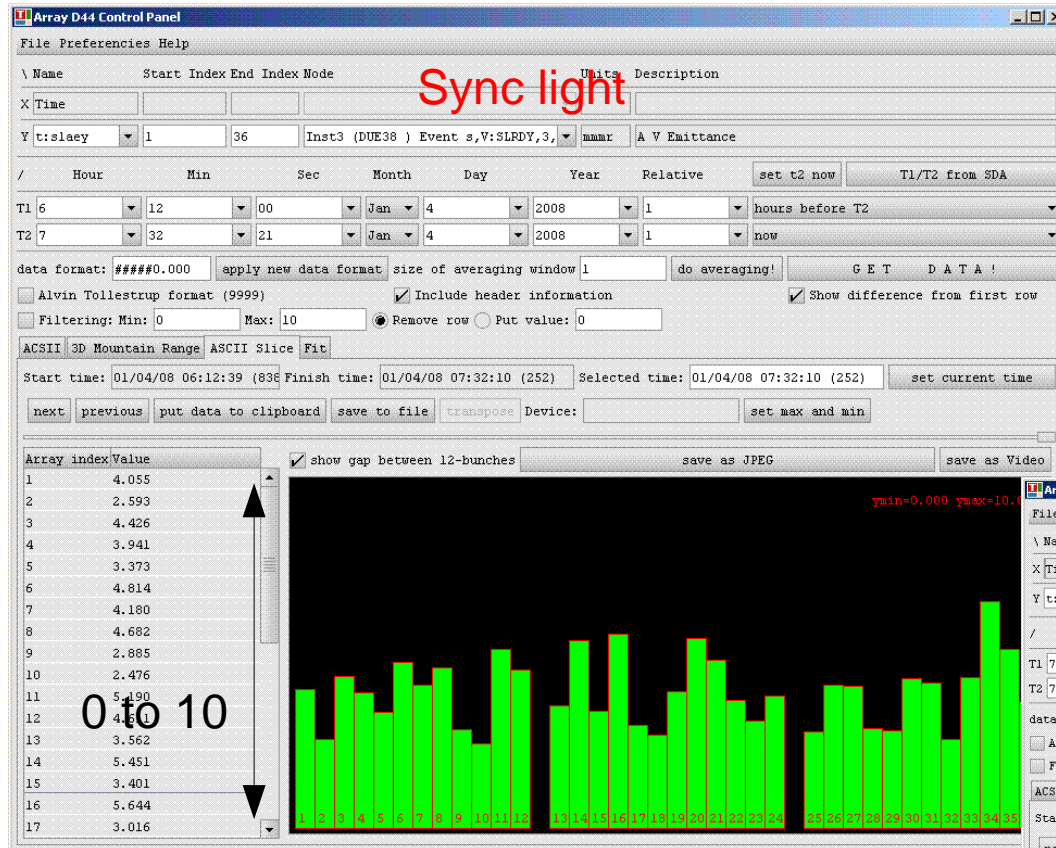
Array Data of Growth (Store 6412)



Difference before and after jacking. Bunch 36 is pbar bunch 1.

Makes no sense.

Sync light and FW compared. EOS expt (Store 5824)



Previous pictures are typical with FW

- See logbook entries
 - Tevatron E-Log 06:38:32 Fri Jan 4 2008
 - Tevatron E-Log 06:38:32 Fri Jan 4 2008
 - Tevatron E-Log 13:11:43 Thu Jan 17 2008
 - Tevatron E-Log 20:13:52 Thu Apr 3 2008