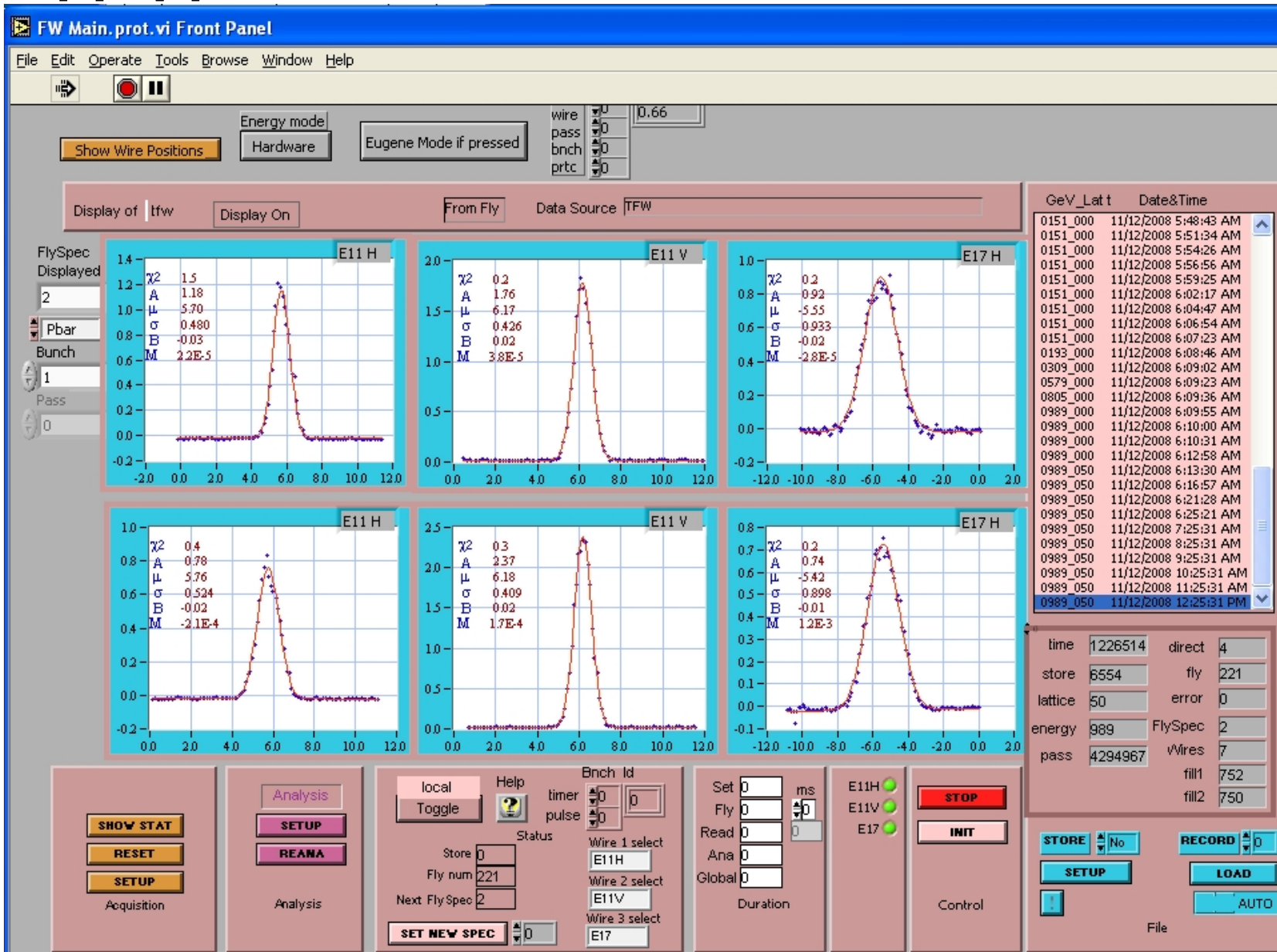


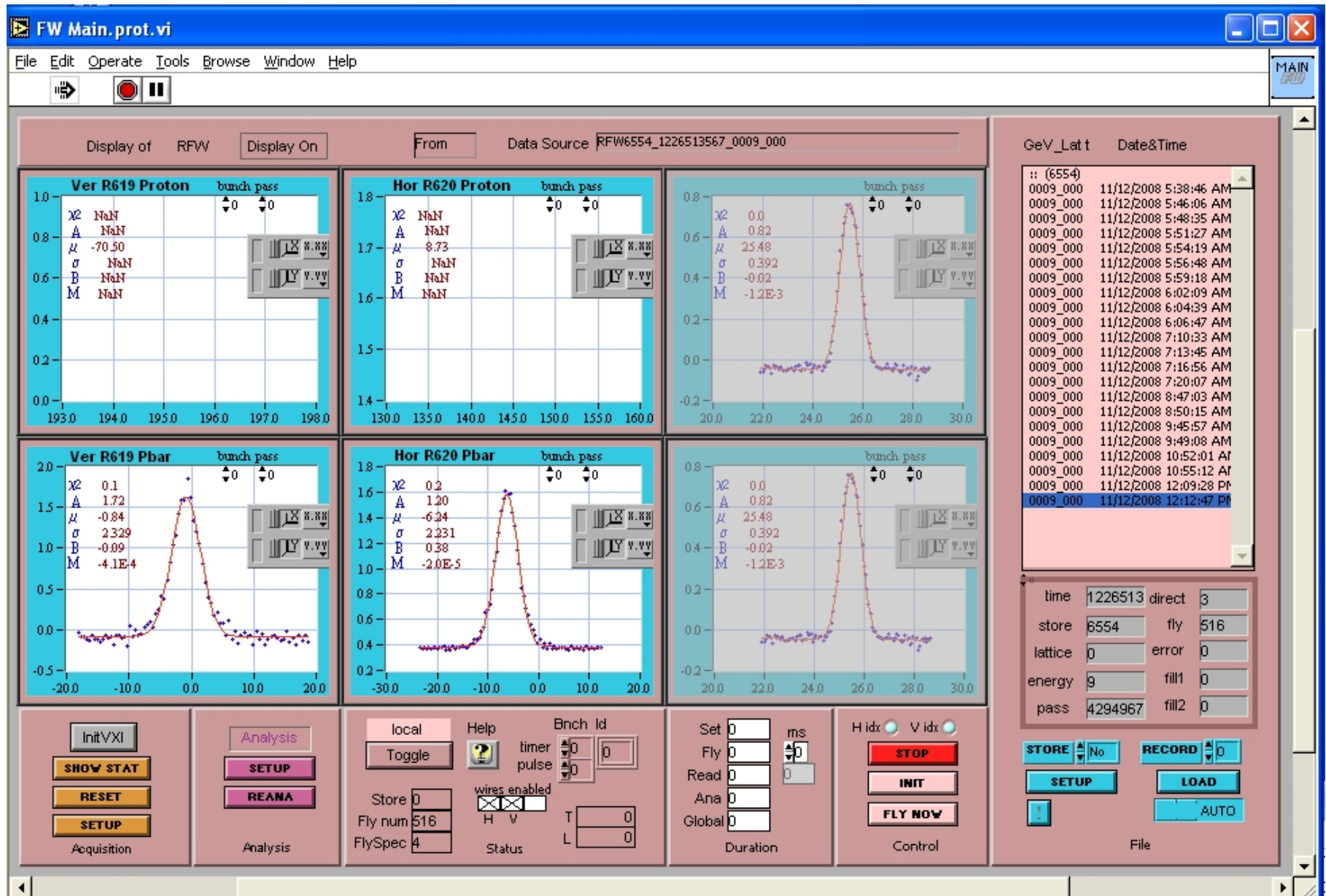
FW and IPM Update

11/12/2008

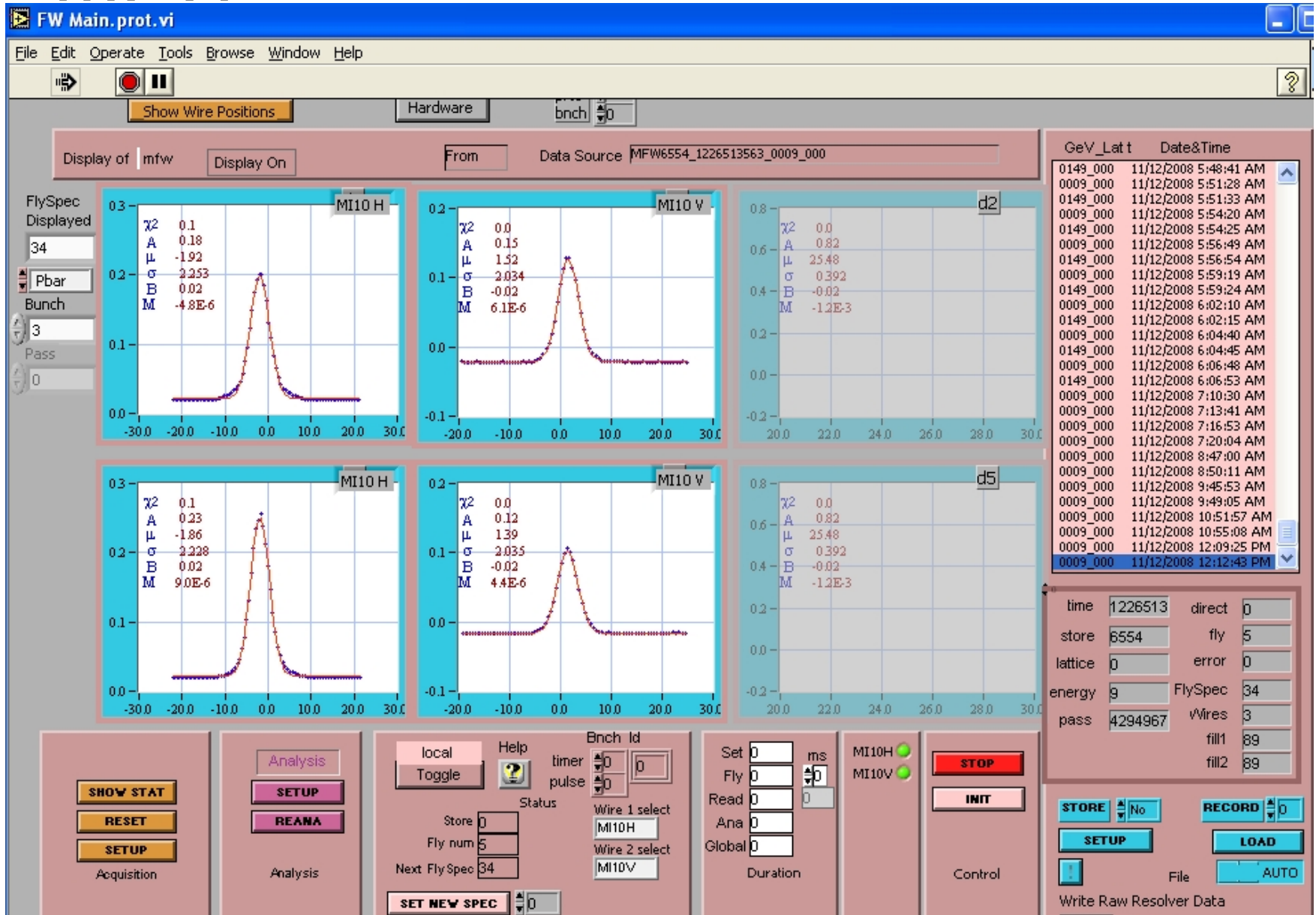
TFW



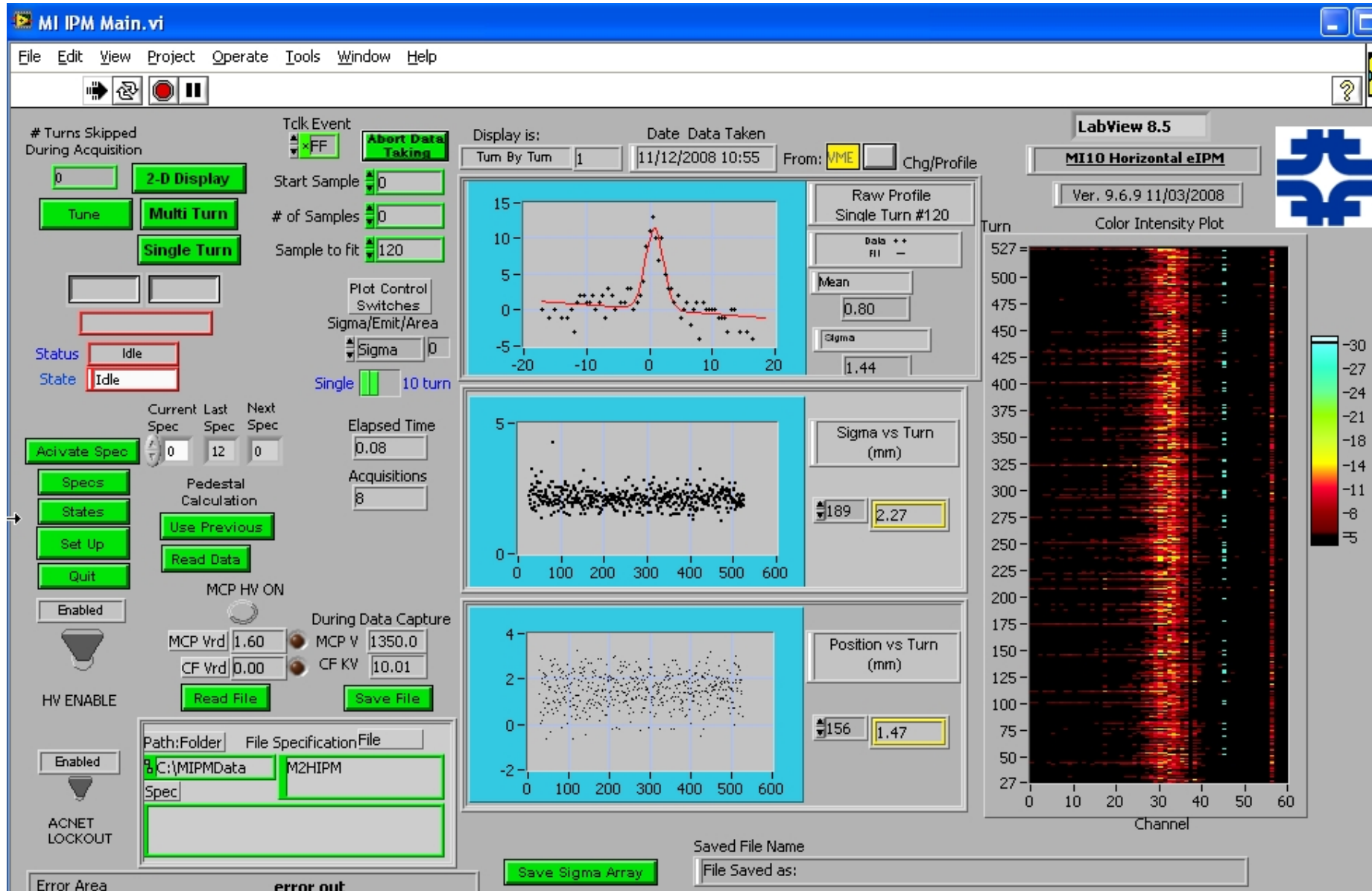
RFW



MFW



MK2-IPM



MK2-IPM Specs

MI IPM Spec Menu.vi

File Edit View Project Operate Tools Window Help

MIIPM Spec Menu

Spec Name: 10-Pbar Shot Injection Next Spec: 0

Pre-Trigger: x40 ON Log Data: OFF Log Sigma: ON

Trigger: xF7

Take Data Delay: 0

Take Data Tout (sec): 120

Beam Sync Delay: 63

Skip Turns: 0

CF Voltage (KV): 10

MCP Voltage (V): 1250

Multi Turn Analysis: ON

Tune: OFF

Average: OFF

Anal Turns: 500

Anal Start Turn: 20

Single Turn Analysis: OFF

Fit Turn: 0

SET SPEC 10

SAVE SPEC

READ DISK SPECS

DONE

Error Message

NO ERR

MI IPM Spec Menu.vi

File Edit View Project Operate Tools Window Help

MIIPM Spec Menu

Spec Name: 12-Pbar Transfer to Next Spec: 0

Pre-Trigger: x91 ON Log Data: OFF Log Sigma: ON

Trigger: x94

Take Data Delay: 1

Take Data Tout (sec): 120

Beam Sync Delay: 65

Skip Turns: 0

CF Voltage (KV): 10

MCP Voltage (V): 1350

Multi Turn Analysis: ON

Tune: OFF

Average: OFF

Anal Turns: 500

Anal Start Turn: 27

Single Turn Analysis: OFF

Fit Turn: 0

00-NOOP

01-Stacking B1

02-Stacking B2

03-Stacking B3

04-Stacking B4

05-Stacking B5

06-Stacking B6

07-Stacking B7

08-Prot Shot Injection

09-Prot Shot Flat Top

10-Pbar Shot Injection

11-Pbar Shot Flat Top

12-Pbar Transfer to Recycle

13-Prot Reverse Injection

14-Prot Reverse Return

SET SPEC 12

SAVE SPEC

READ DISK SPECS

DONE

Error Message

NO ERR

Help